

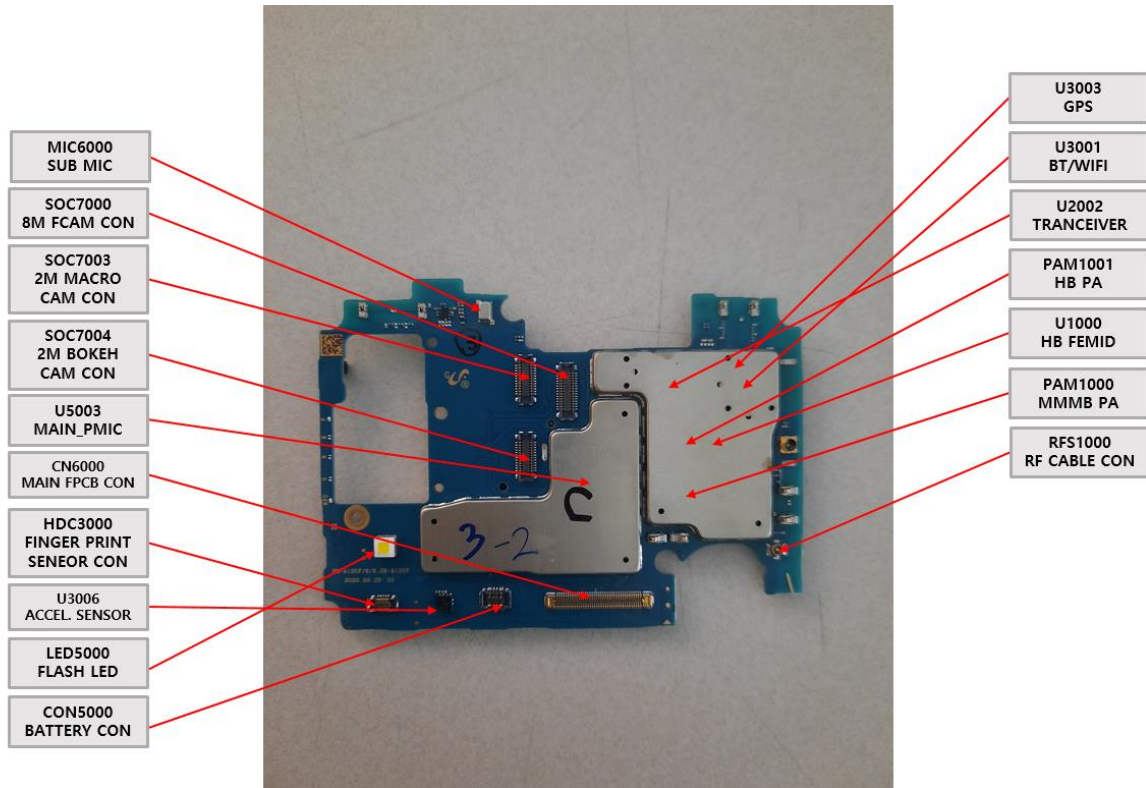
---

## 8. Level 3 Repair (VIETMOBILE.VN)

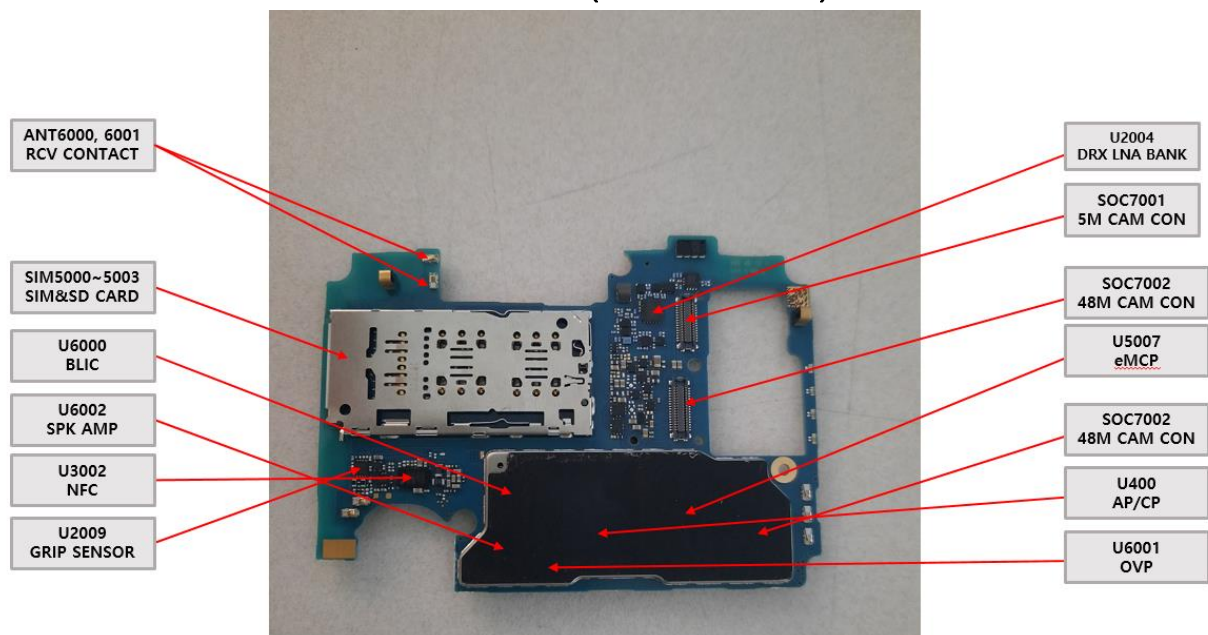
---

### 8-1. Components Layout

MAIN PBA (TOP SIDE)



MAIN PBA (BOTTOM SIDE)

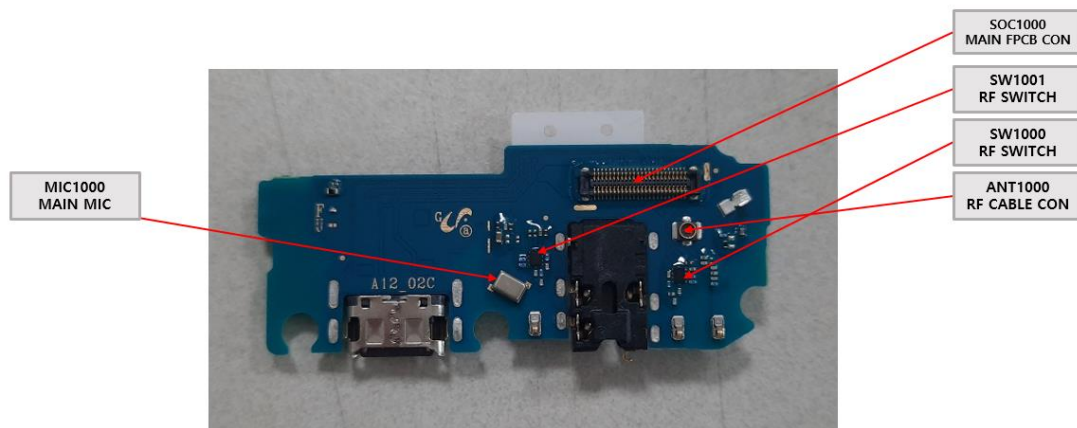


---

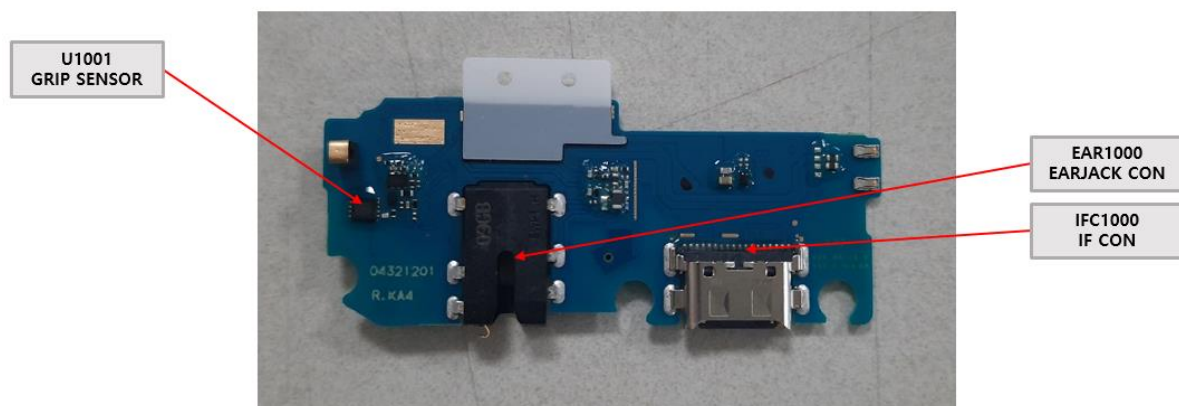
## 8. Level 3 Repair (VIETMOBILE.VN)

---

### SUB PBA (TOP SIDE)



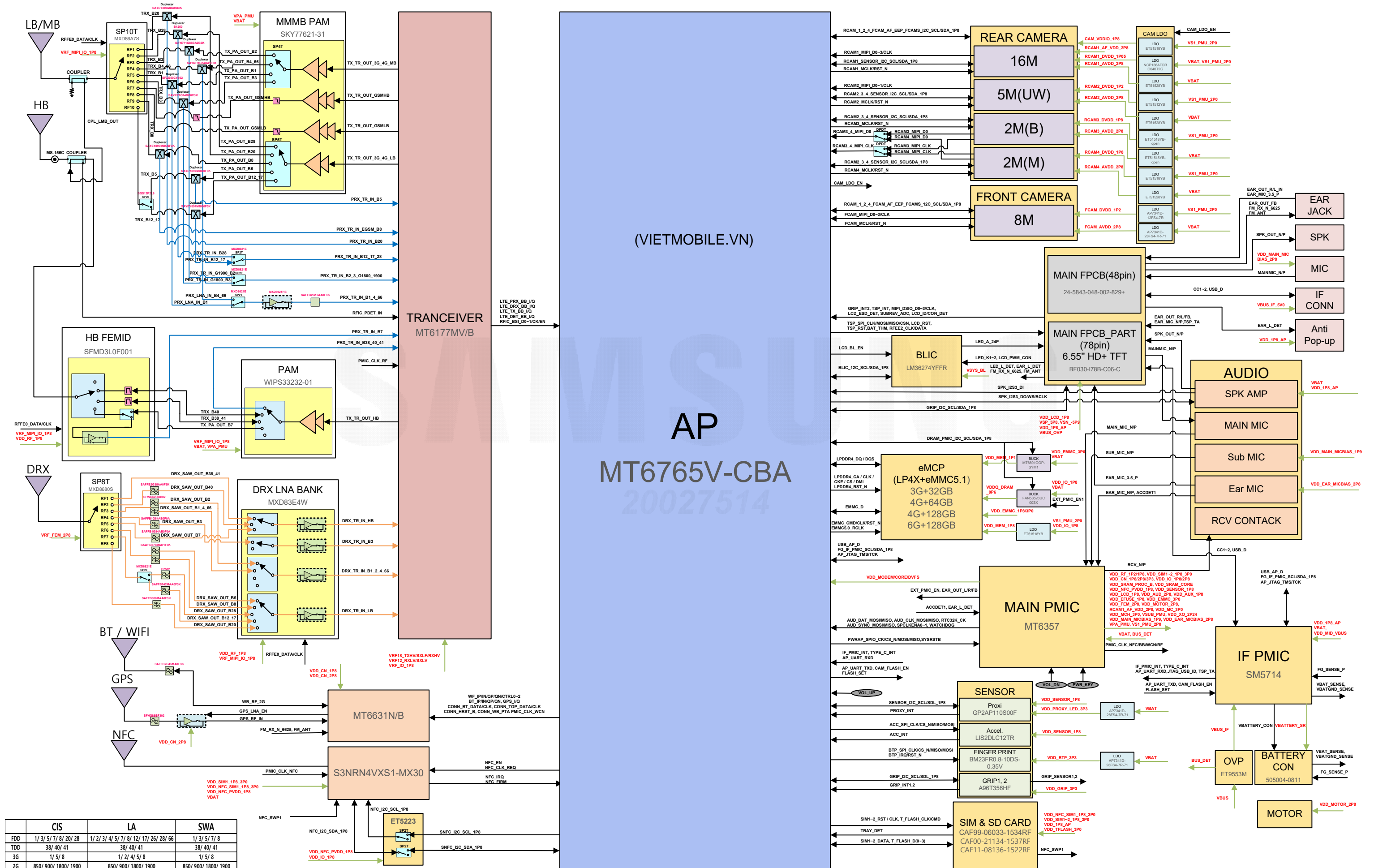
### SUB PBA (BOTTOM SIDE)



RF

AP

BB





SM-A125F

(VIETMOBILE.VN)

SOC7003

SOC7000

SOC7004

SC7002

SC7001

U5003

PAM1000

U3001

CN6000

CON5000

HDC3000

HDC4000

LED3000

CON7001

RFS1000

PMT1001

PMT1002

RFS1001

PMT3003

PMT3004

MTC6000

PMT2002

U2003

PMT2001

U3006

1

1

1

1

1

1

SM-A125M

SIM5001

SIM5002

SIM5000

SIM5003

U3000

SOC7001

SOC7002

C047000

C047000

SC7000

U400

U5007

50TH7000

50TH7000

50TH7000

50TH7000

50TH7000

50TH7000

50TH7000

50TH7000

50TH7000



SM-A125M

CON7001

SOC7003

SOC7000

SOC7004

U5003

SC7002

U2002

U3001

PAM1000

PAM1001

U1000

RFS1001

PNT1002

PNT1001

RFS1000

SC7001

HDC4000

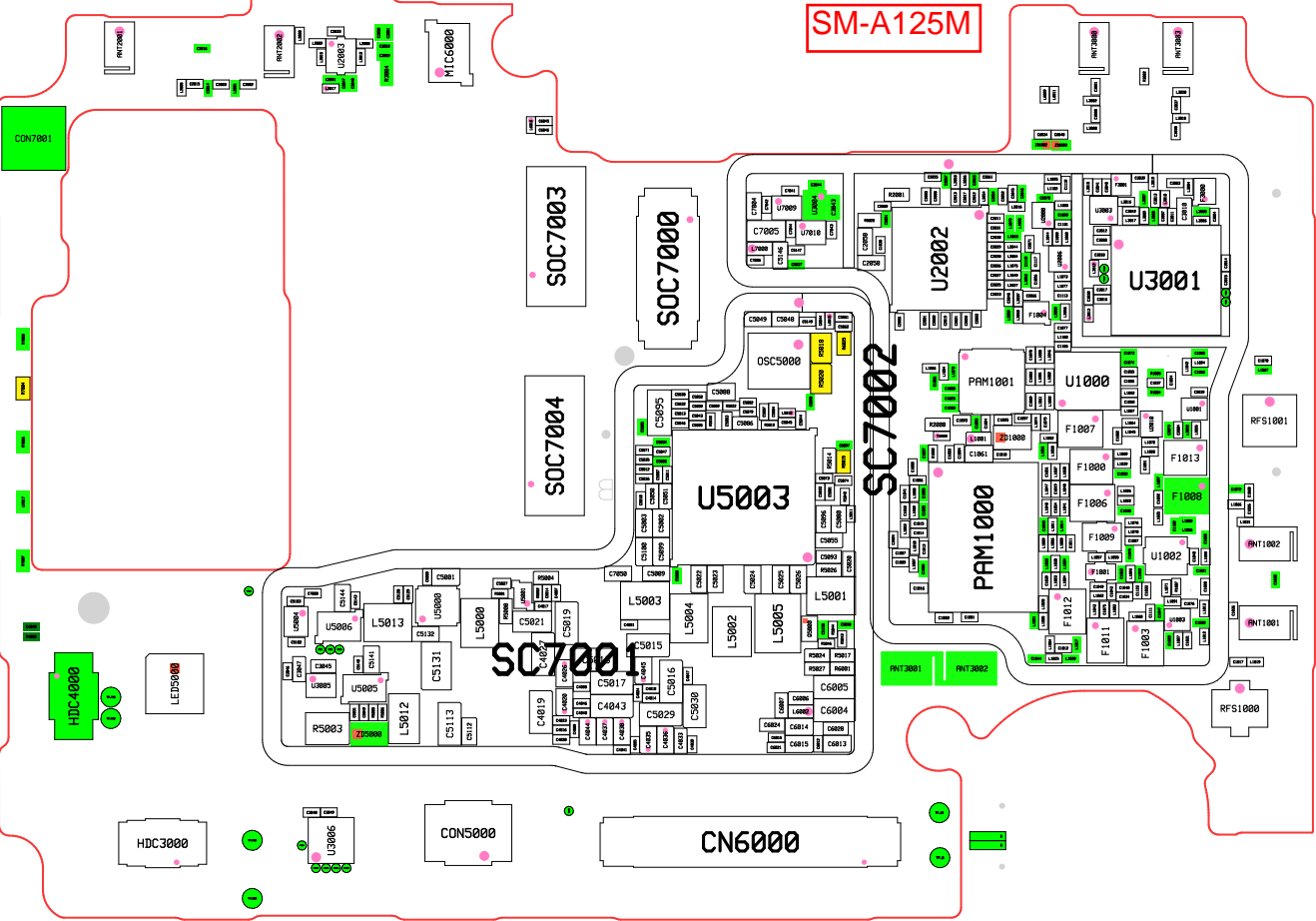
LED5000

HDC3000

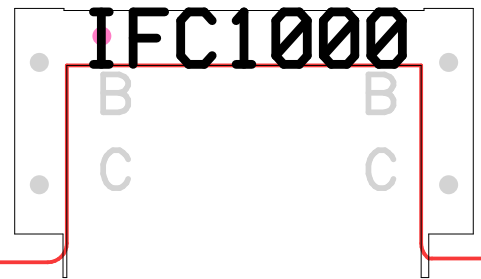
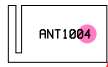
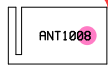
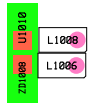
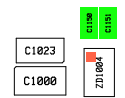
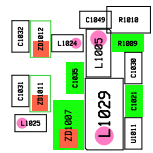
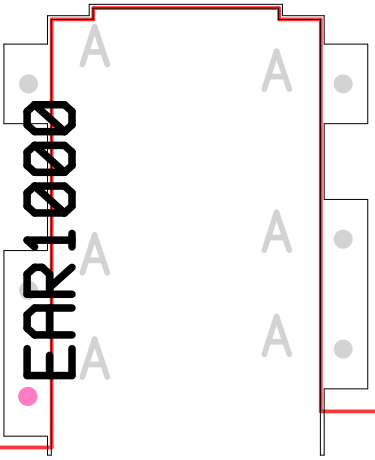
U3006

CON5000

CN6000



SM-A125F/M  
Common





SM-A125F/M  
Common

TH1000  
R1012

R1014

R1015

L1019  
C1028  
Z1003  
R1017

C1026  
L1022

U1013  
C1148  
C1070  
L1042

L1053  
L1059  
SK1001  
C1092  
L1031  
C1054  
L1050  
L1002

MIC1000

ANT1002

SOC1000

CON3

ANT1000

L1001  
R1000  
R1001  
C1027

U1012  
C1025  
L1013  
L1060  
L1032  
C1093  
C1077  
L1030  
C1078  
L1002

L1003  
C1024  
L1001  
C1028  
C1018

ANT1007

ANT1003

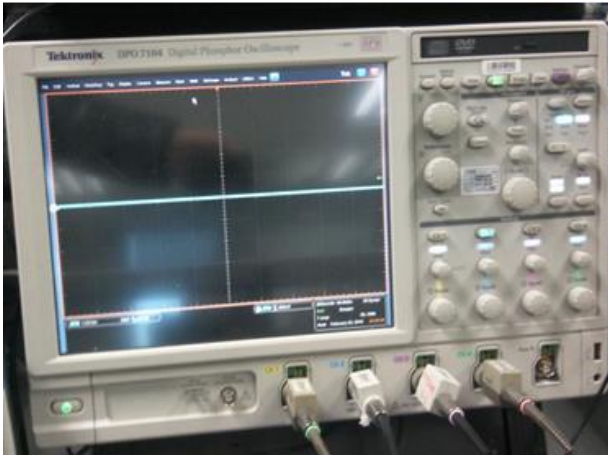
B  
C

B  
C

A  
A  
A  
A  
A

## 8. Level 3 Repair

### 8-2. Flow chart of Troubleshooting.



**Oscilloscope**



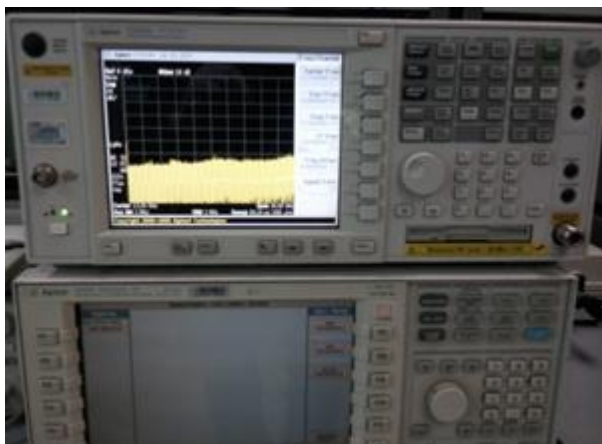
**Digital Multimeter**



**Power Supply**



**+ driver, ESD Safe Tweezer**



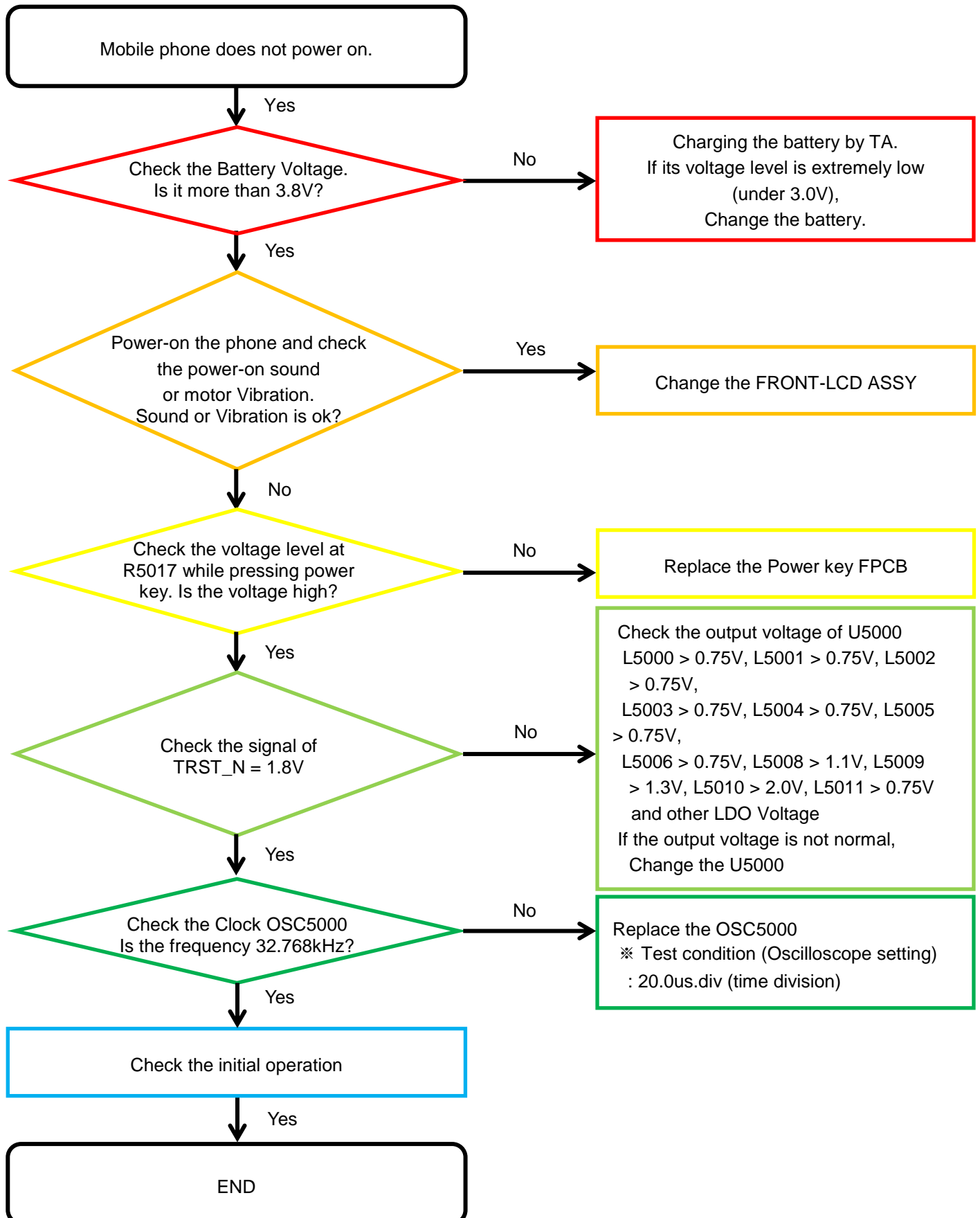
**8960 & Spectrum Analyzer**



**Soldering iron**

## 8. Level 3 Repair

### 8-3-1. Power On

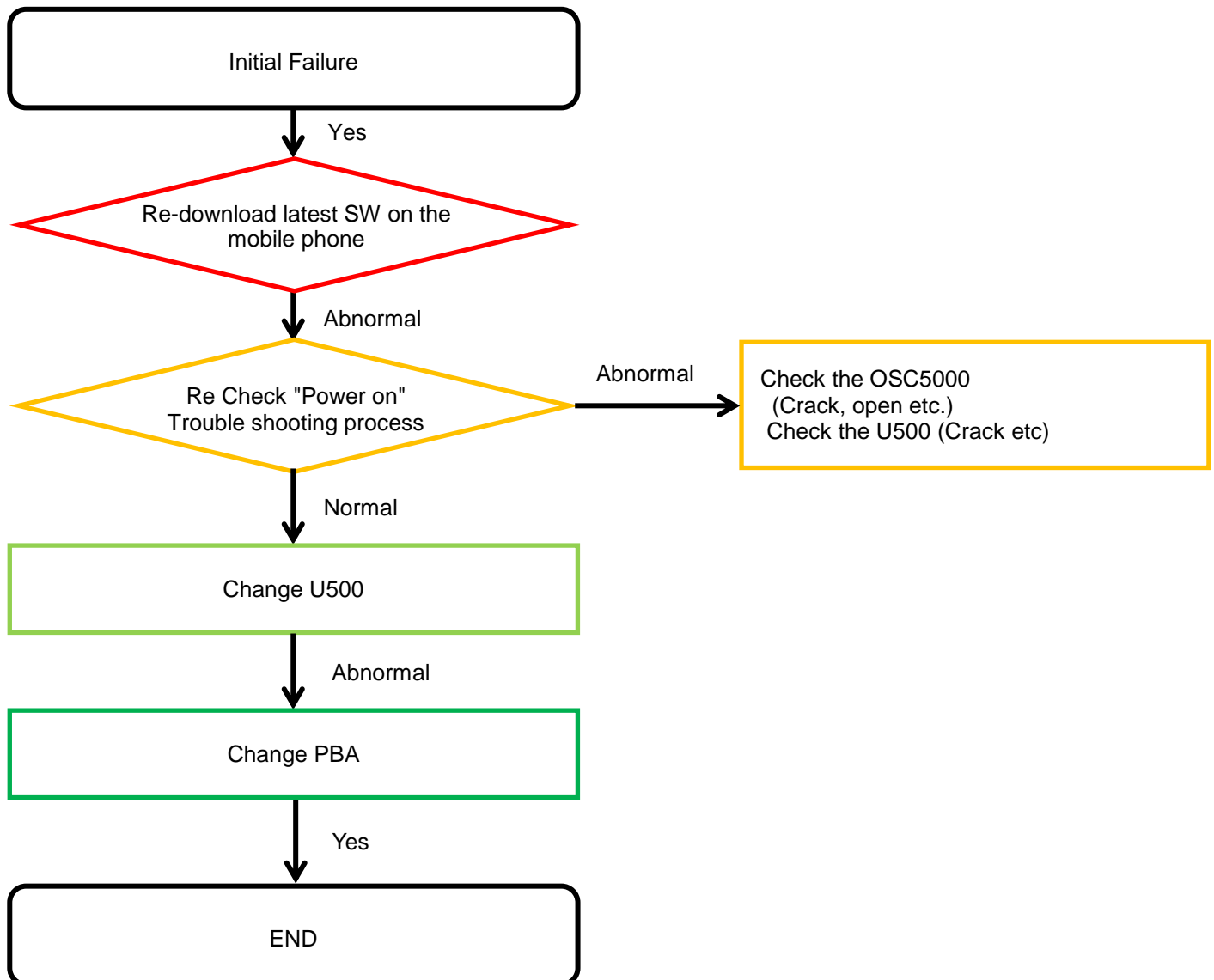


---

## 8. Level 3 Repair

---

### 8-3-2. Initial

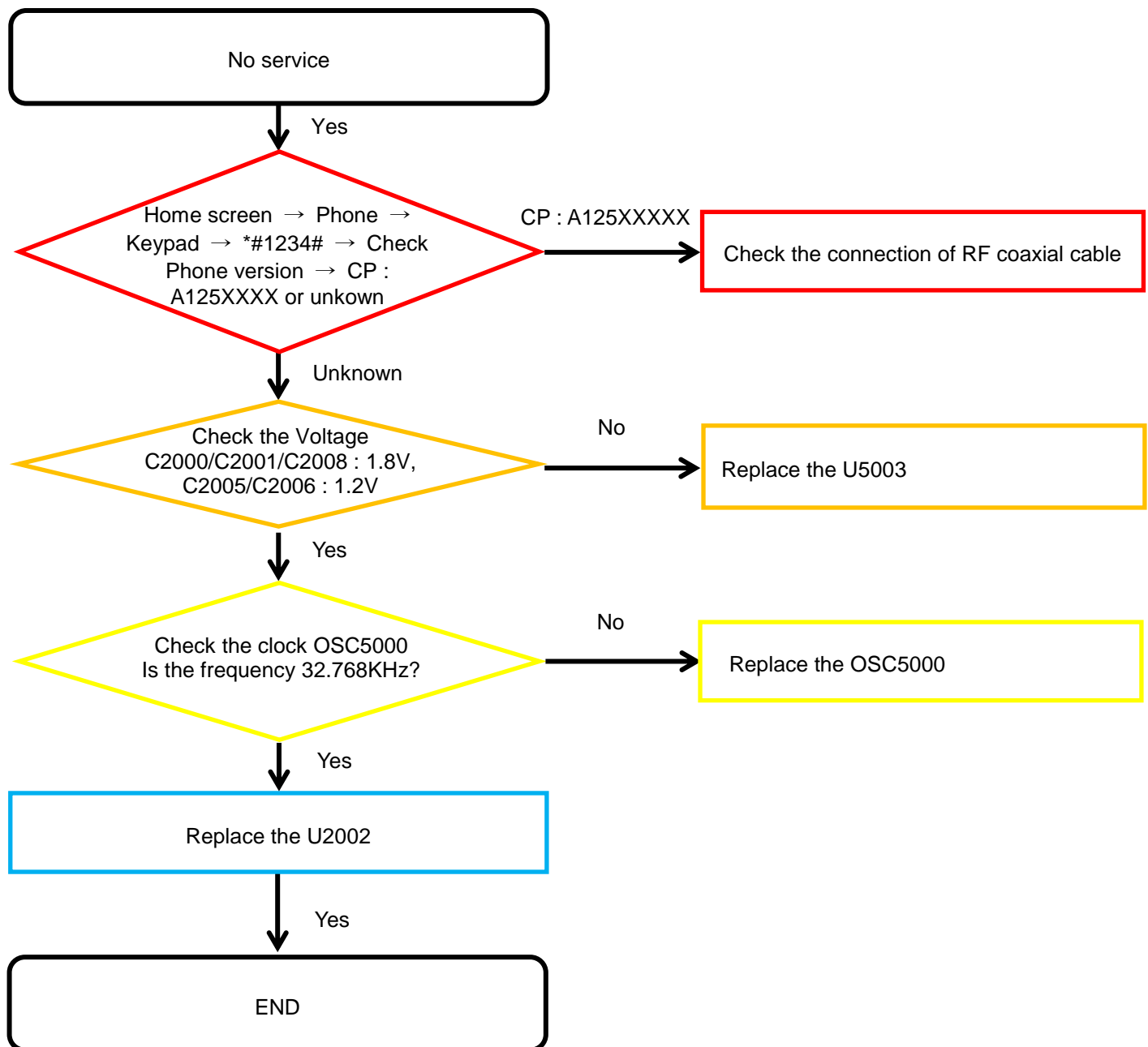


---

## 8. Level 3 Repair

---

### 8-3-3. No Service

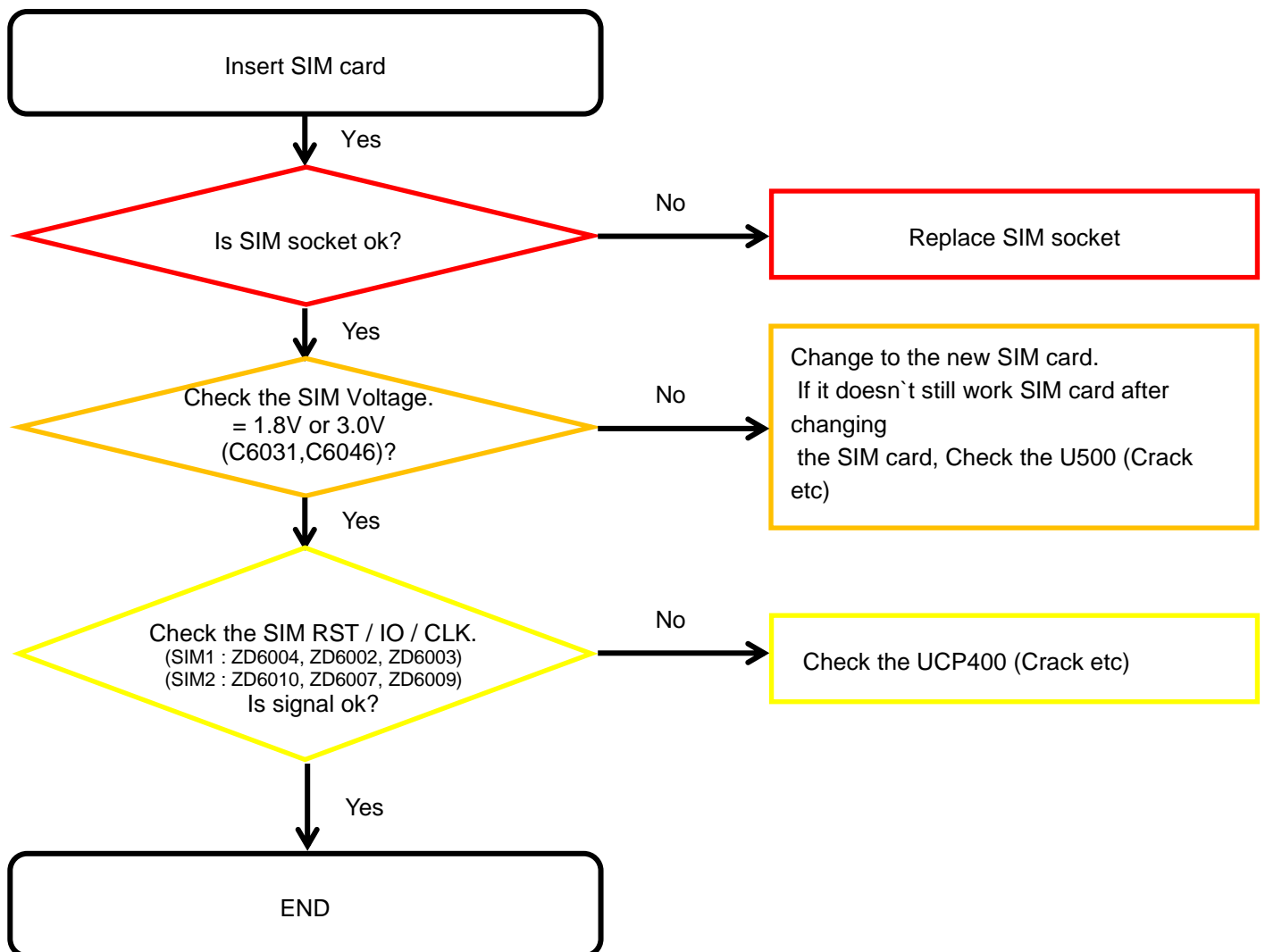


---

## 8. Level 3 Repair

---

### 8-3-4. SIM Part

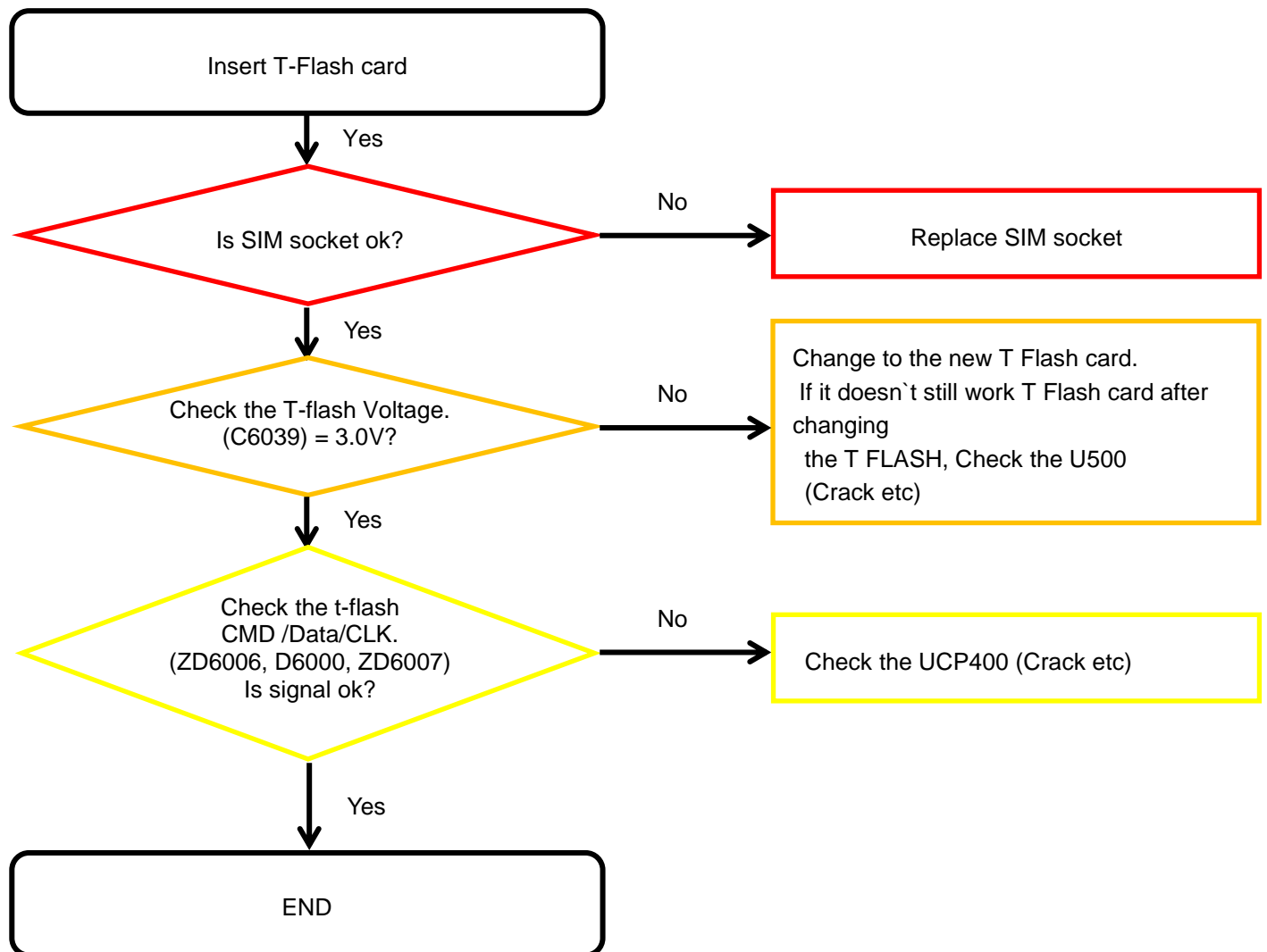


---

## 8. Level 3 Repair

---

### 8-3-5. T-Flash Part



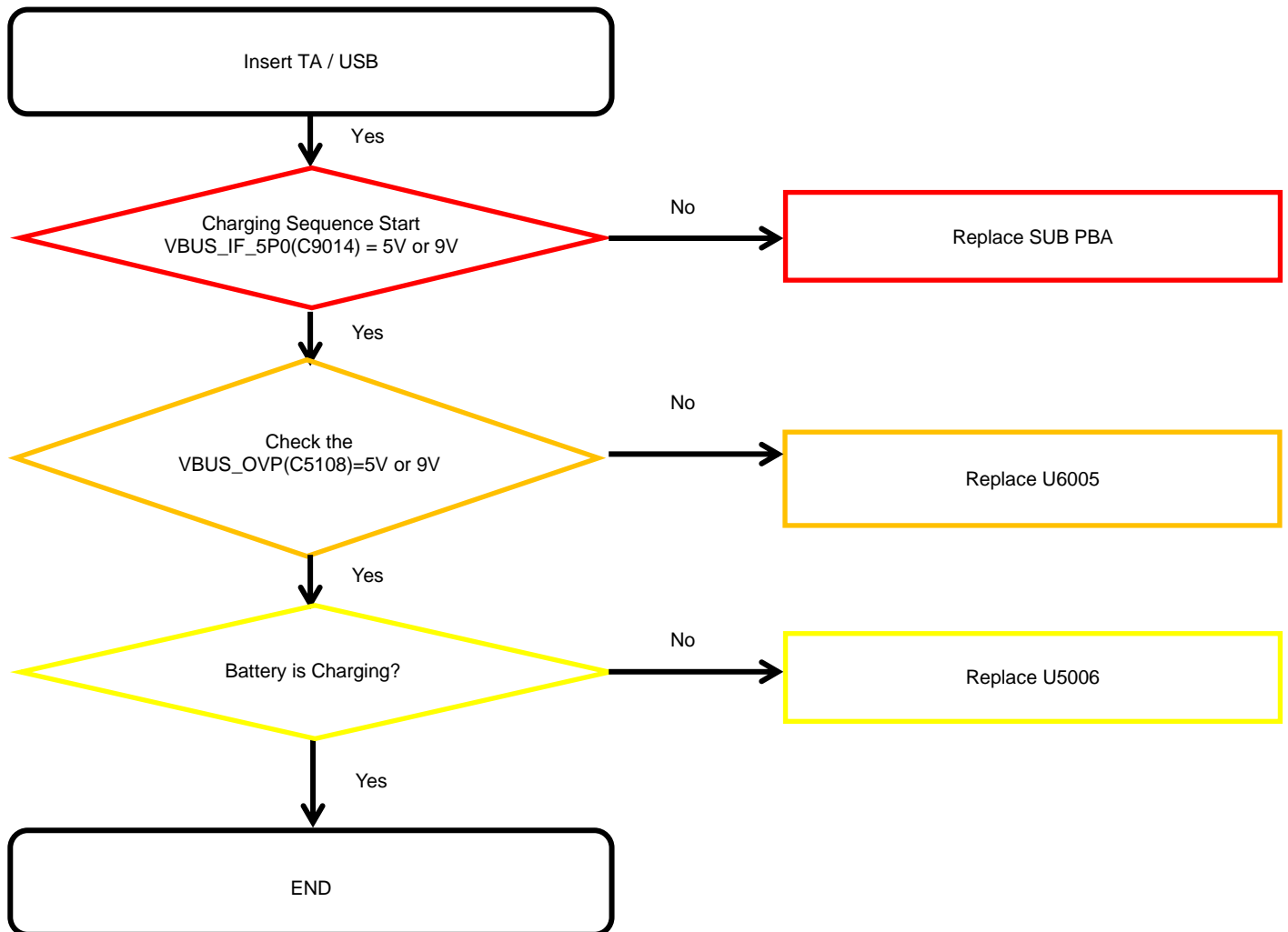


---

## 8. Level 3 Repair

---

### 8-3-6. Cable Charging Part

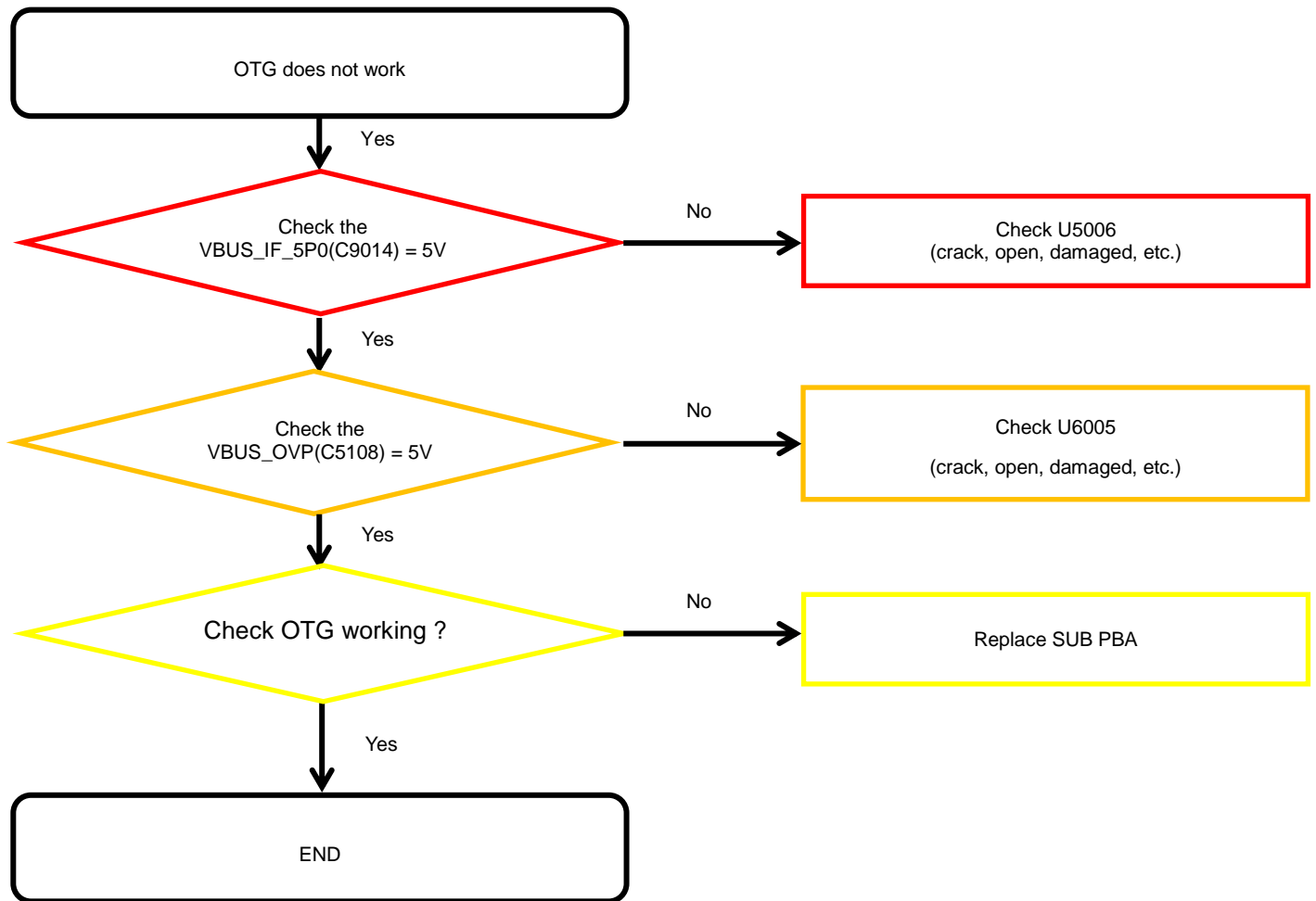


---

## 8. Level 3 Repair

---

### 8-3-7. OTG

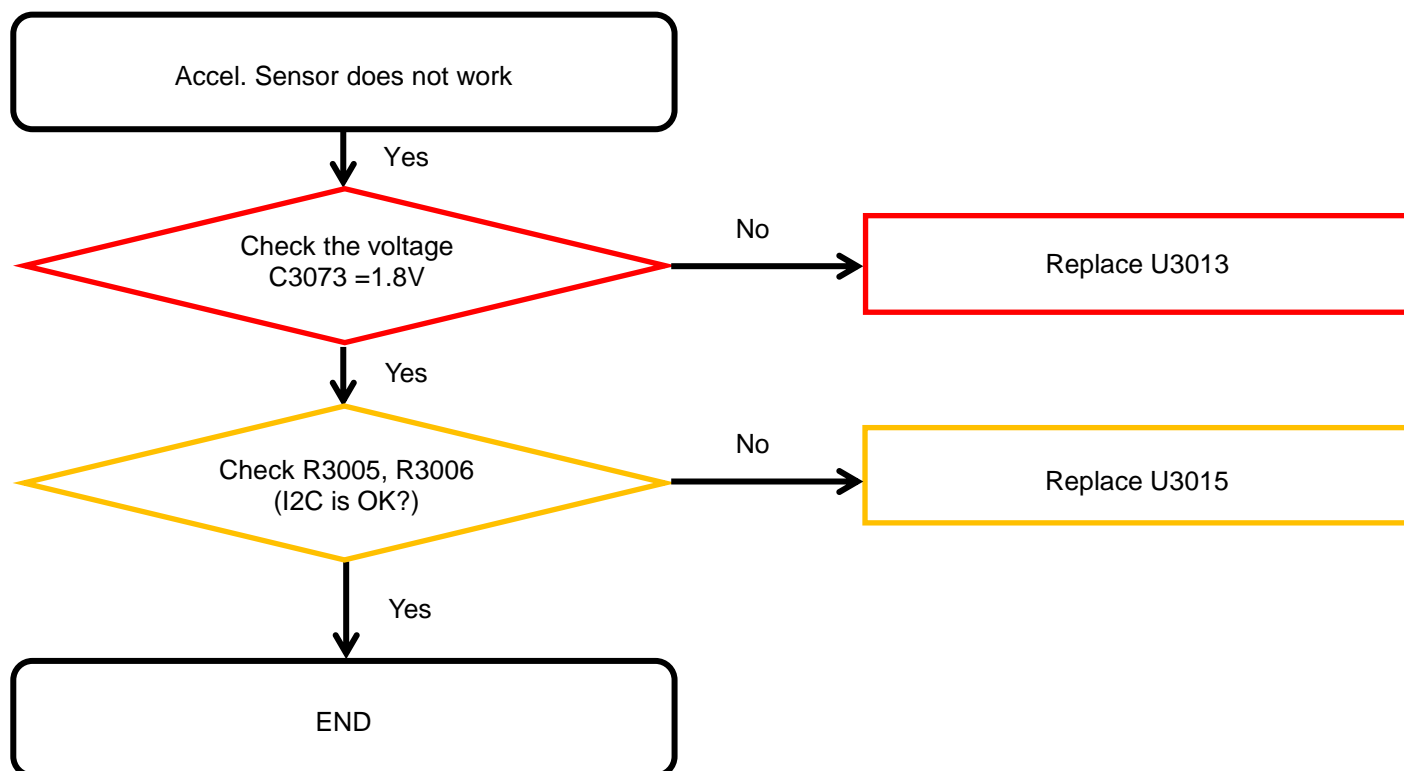


---

## 8. Level 3 Repair

---

### 8-3-8-1. Accel. Sensor

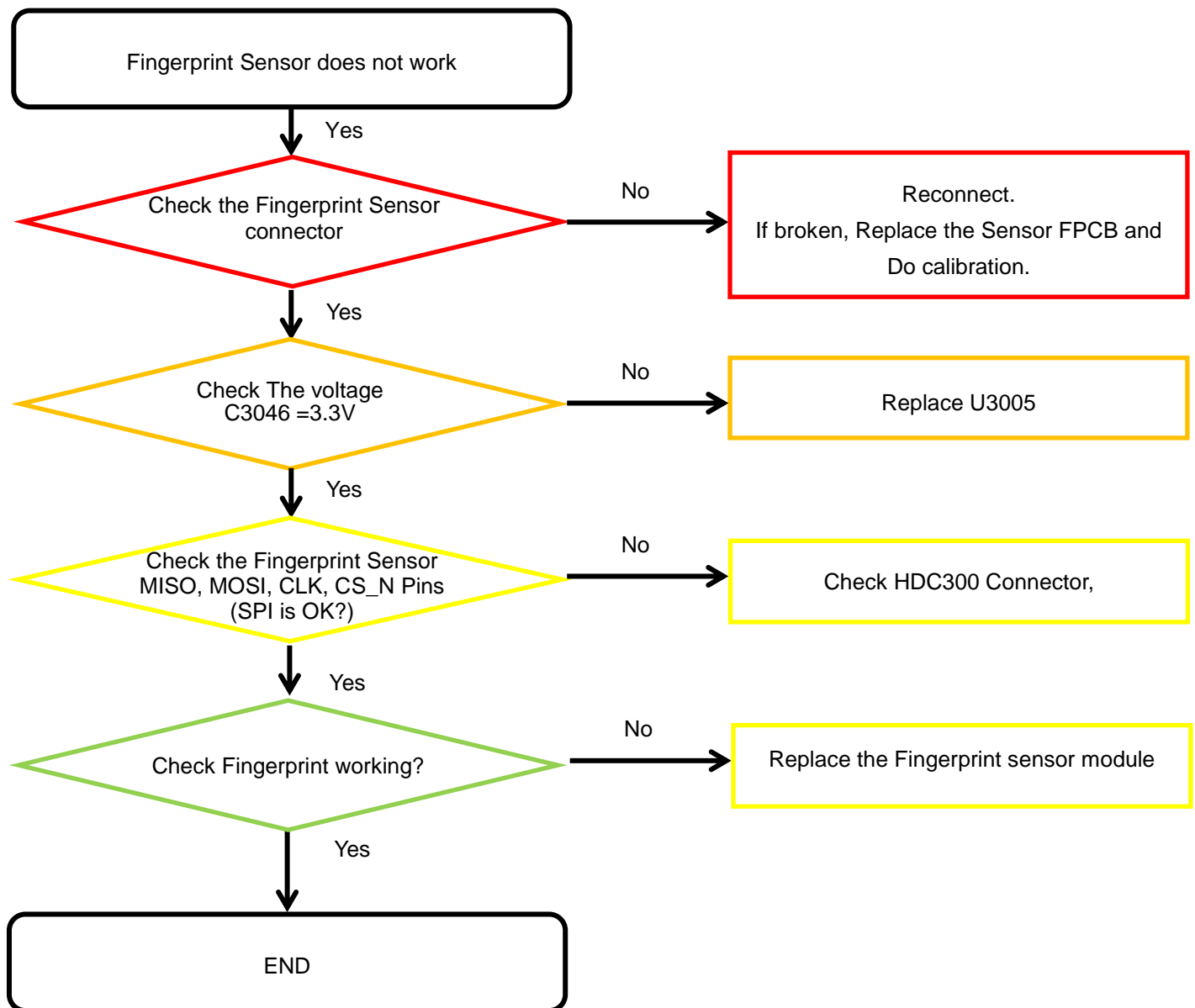


---

## 8. Level 3 Repair

---

### 8-3-8-2. Fingerprint Sensor

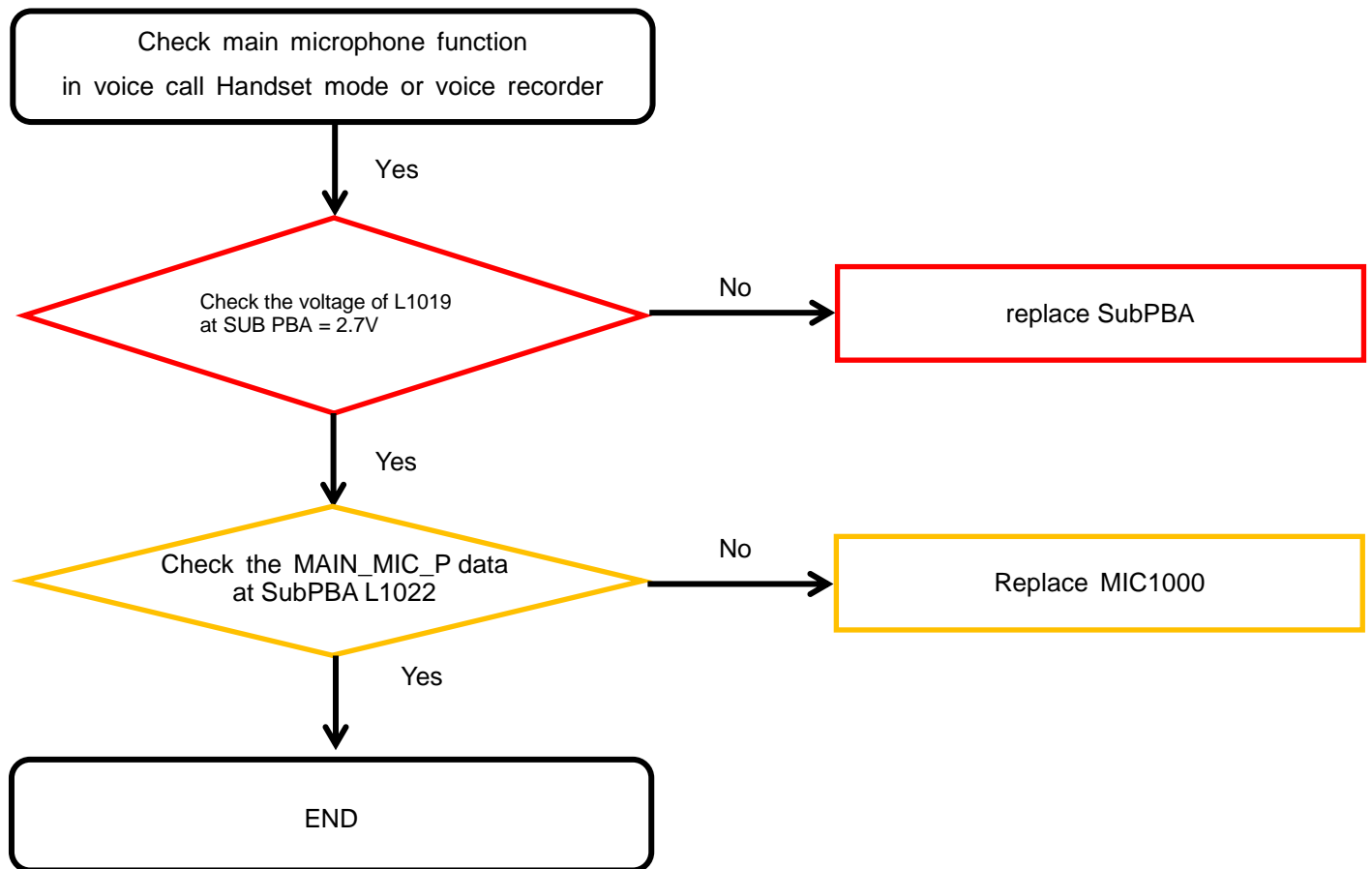


---

## 8. Level 3 Repair

---

### 8-3-9-1. Microphone Part - Main MIC

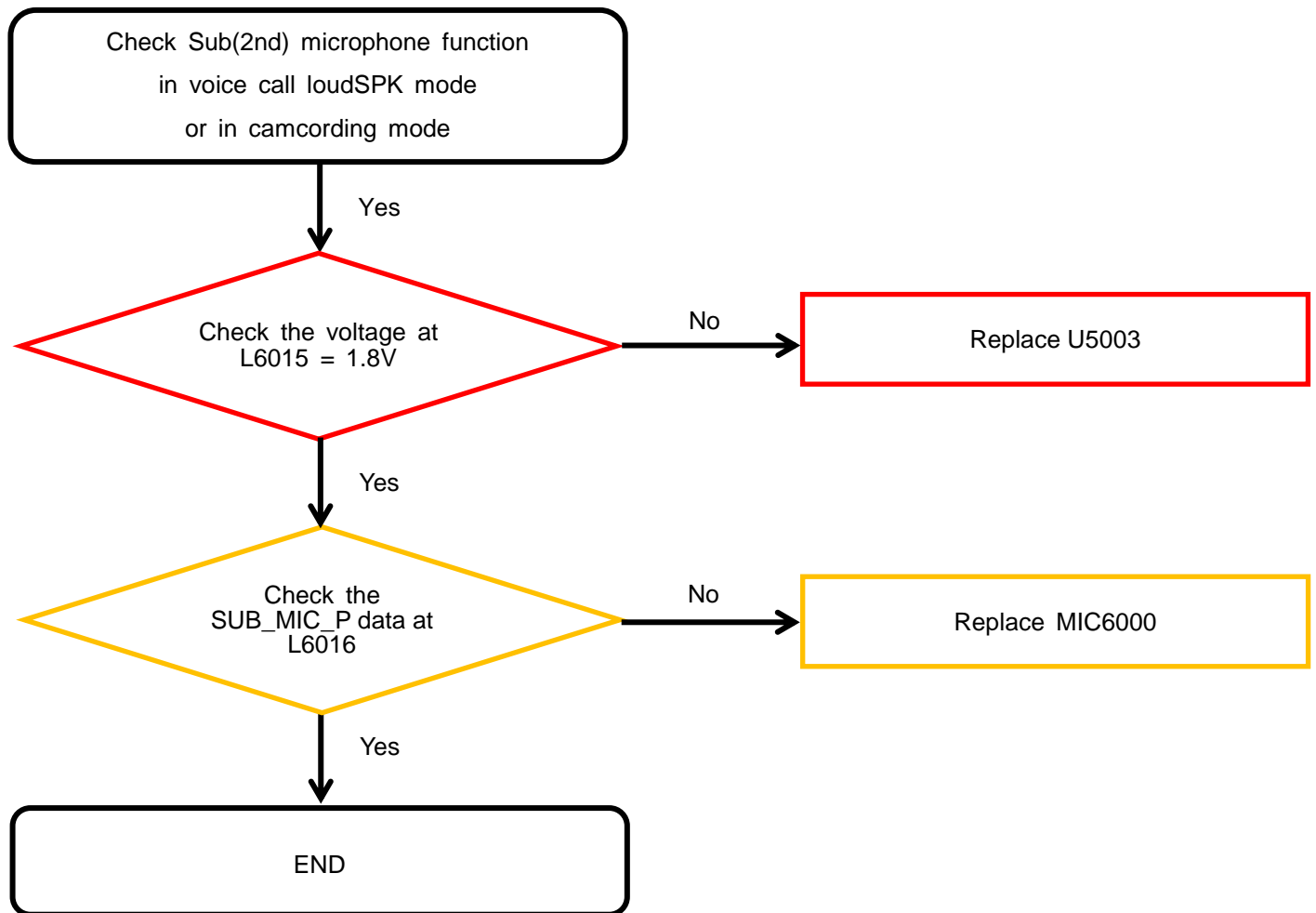


---

## 8. Level 3 Repair

---

### 8-3-9-2. Microphone Part - Sub(2nd) MIC

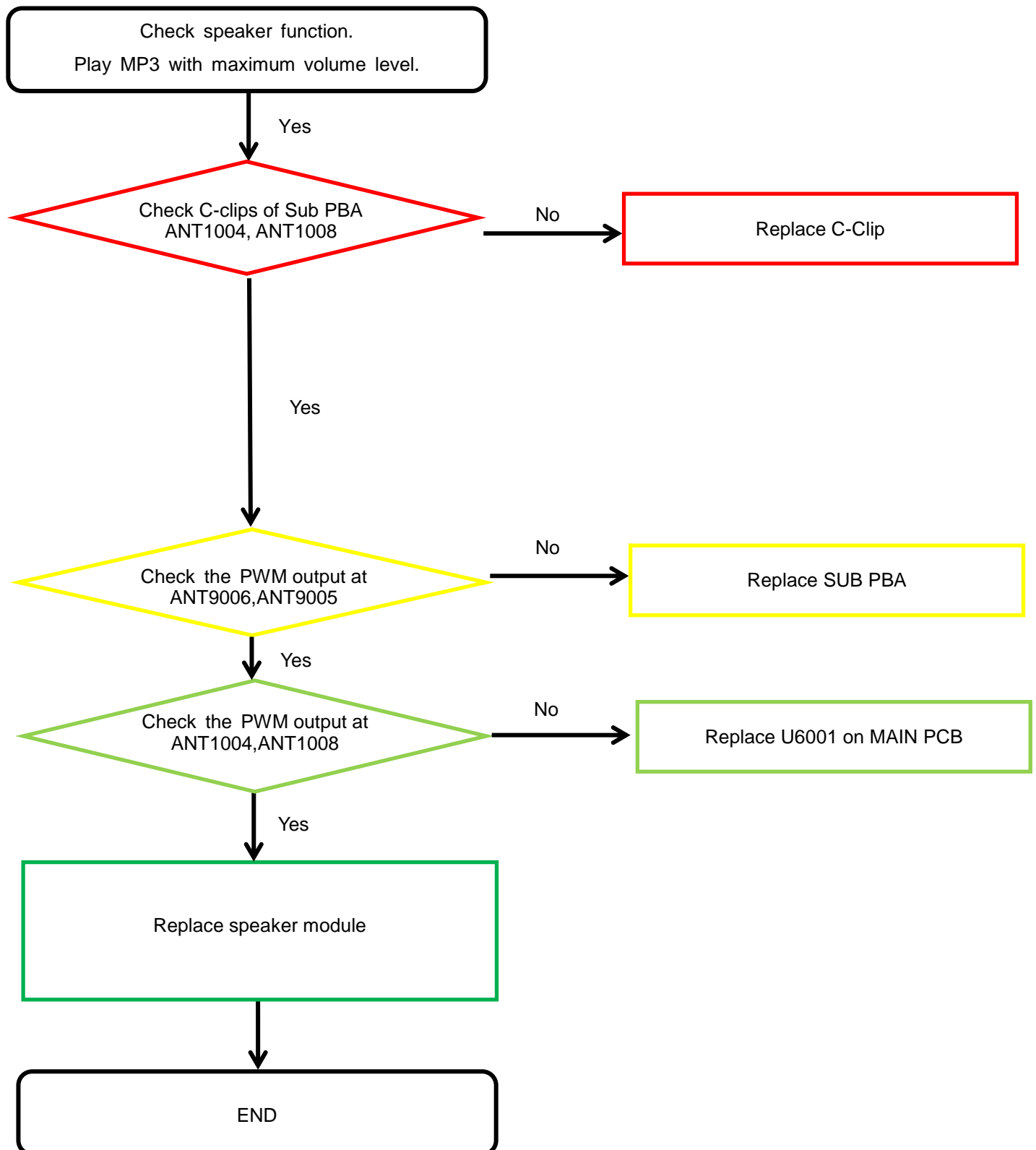


---

## 8. Level 3 Repair

---

### 8-3-10. Speaker Part



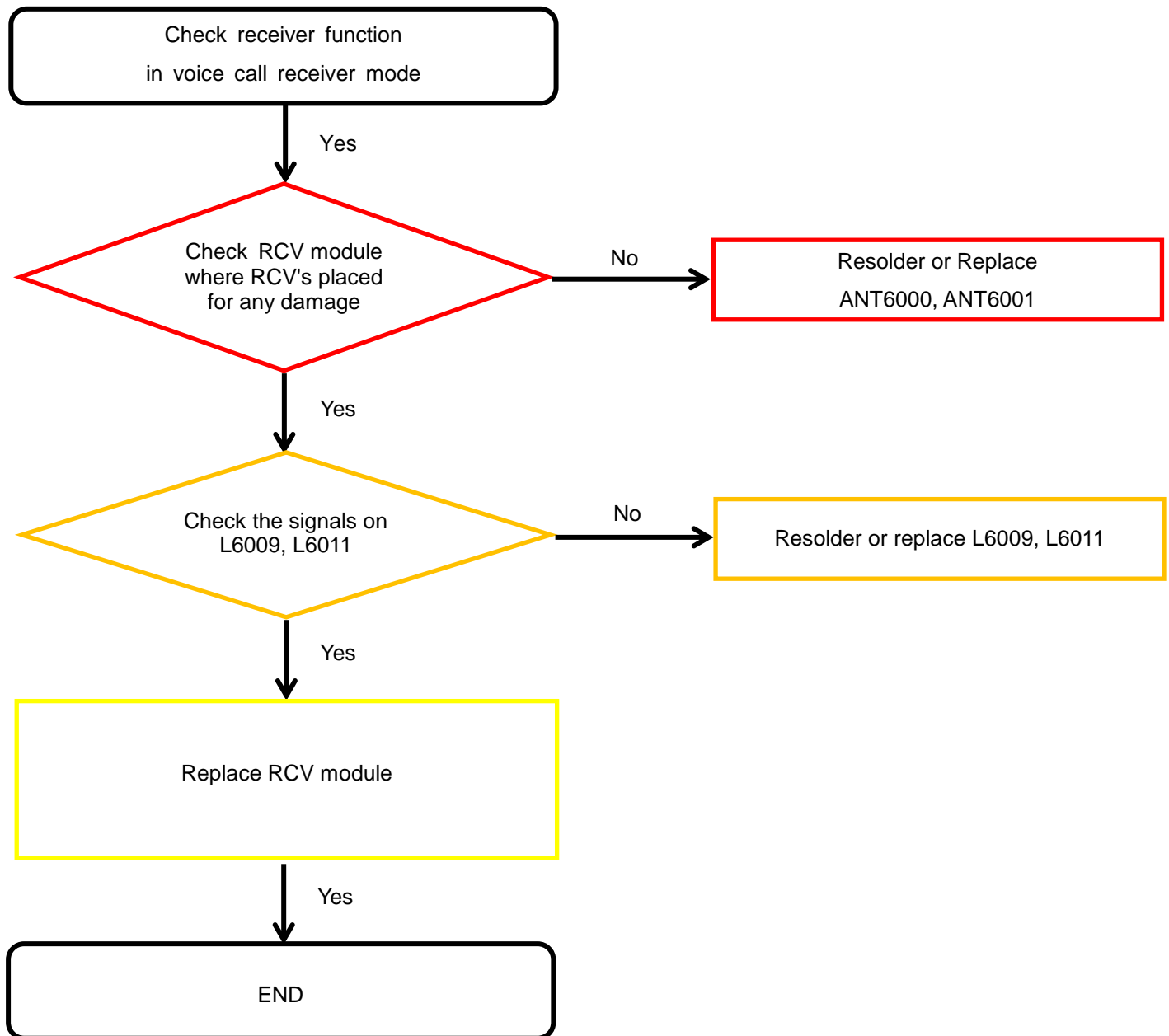


---

## 8. Level 3 Repair

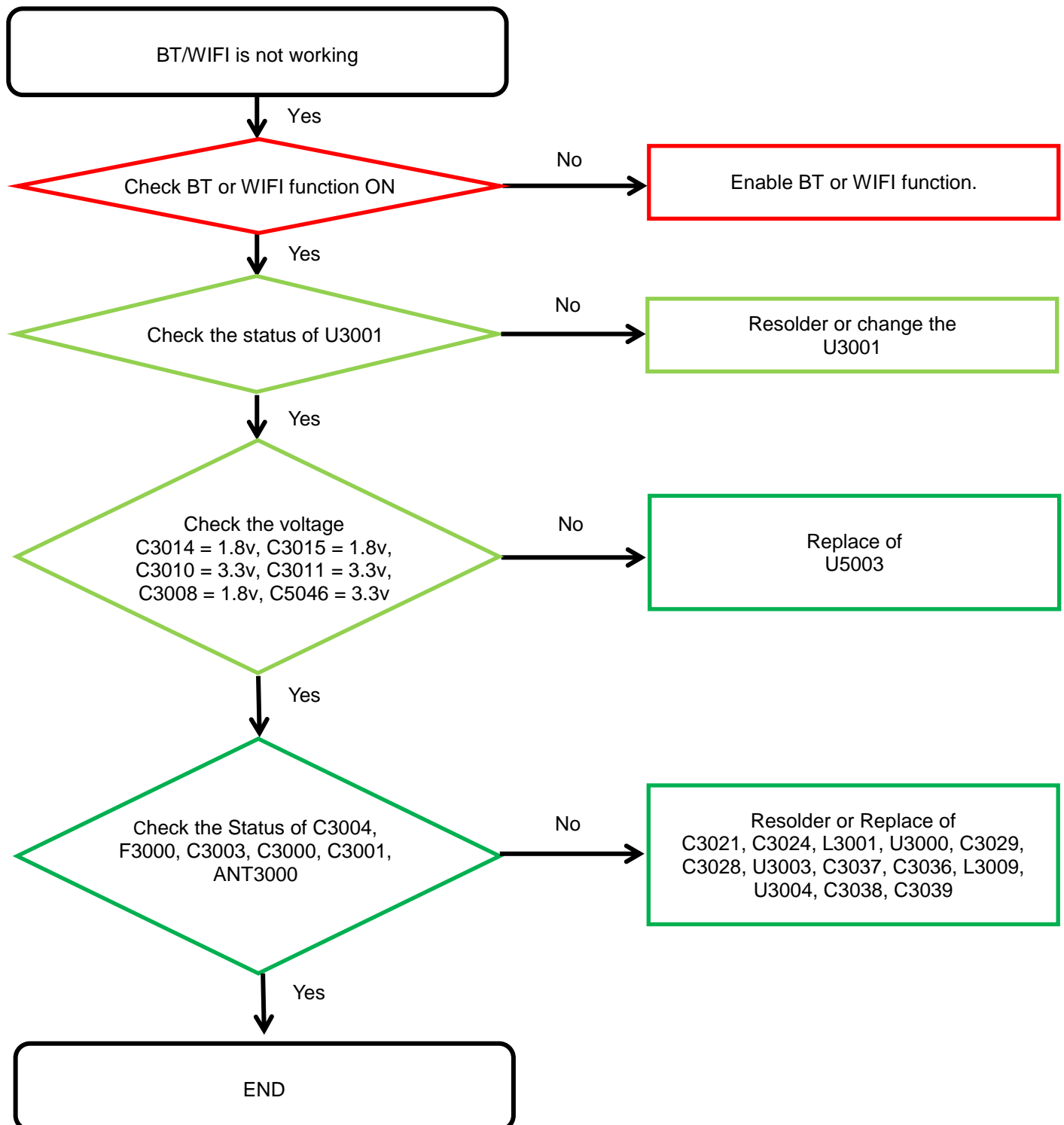
---

### 8-3-11. Receiver Part



## 8. Level 3 Repair

### 8-3-12. BT/WIFI

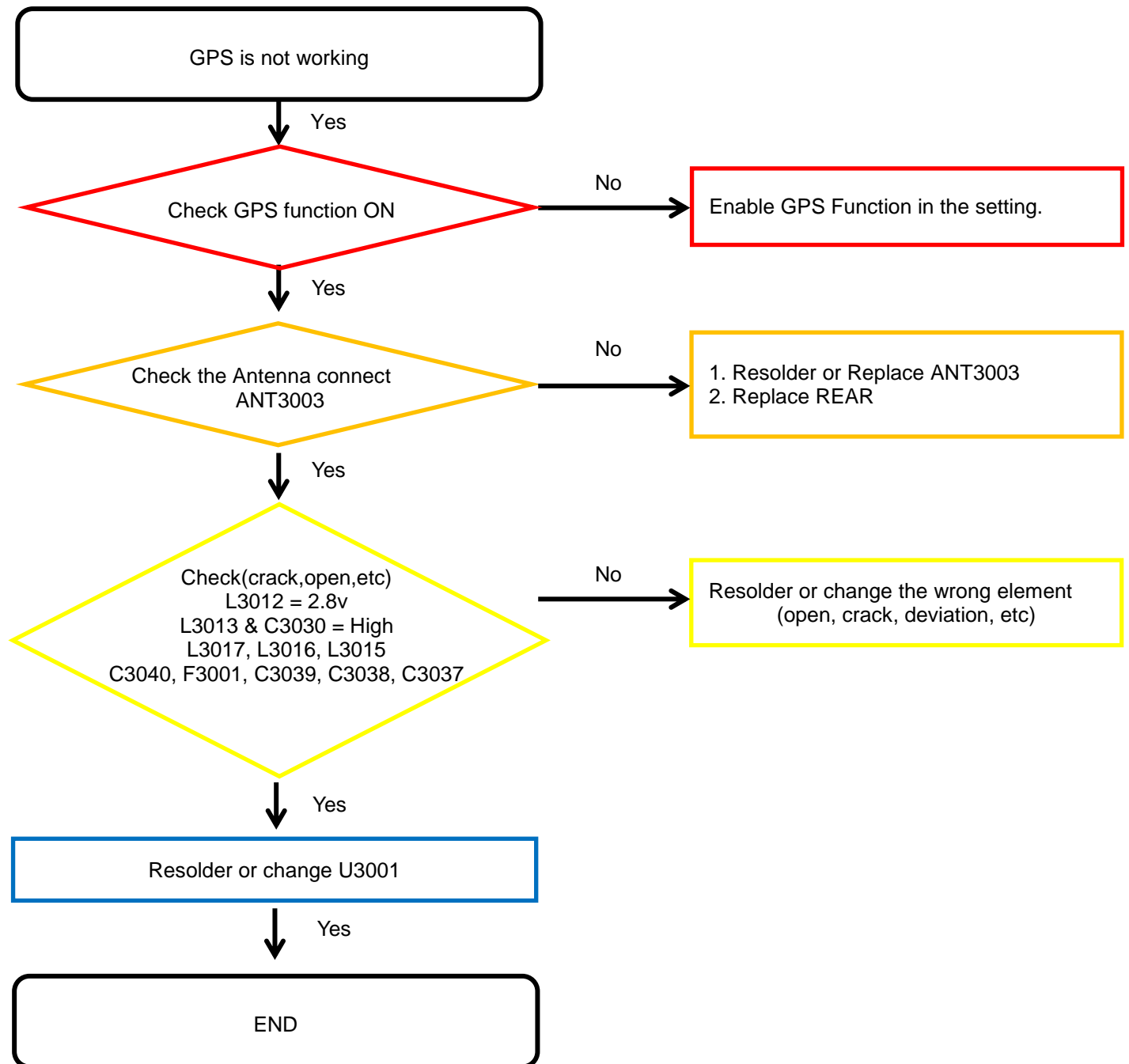


---

## 8. Level 3 Repair

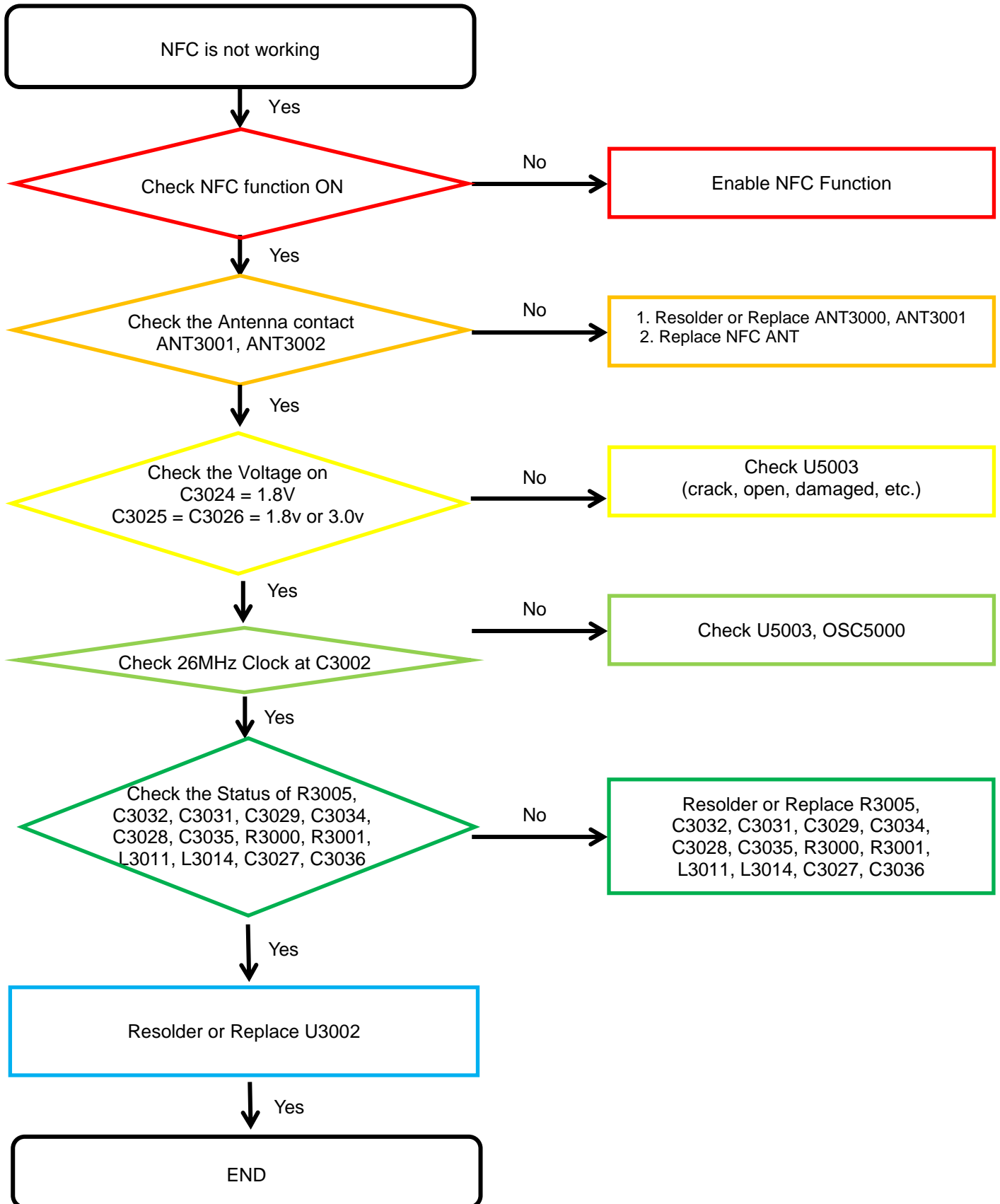
---

### 8-3-13. GPS



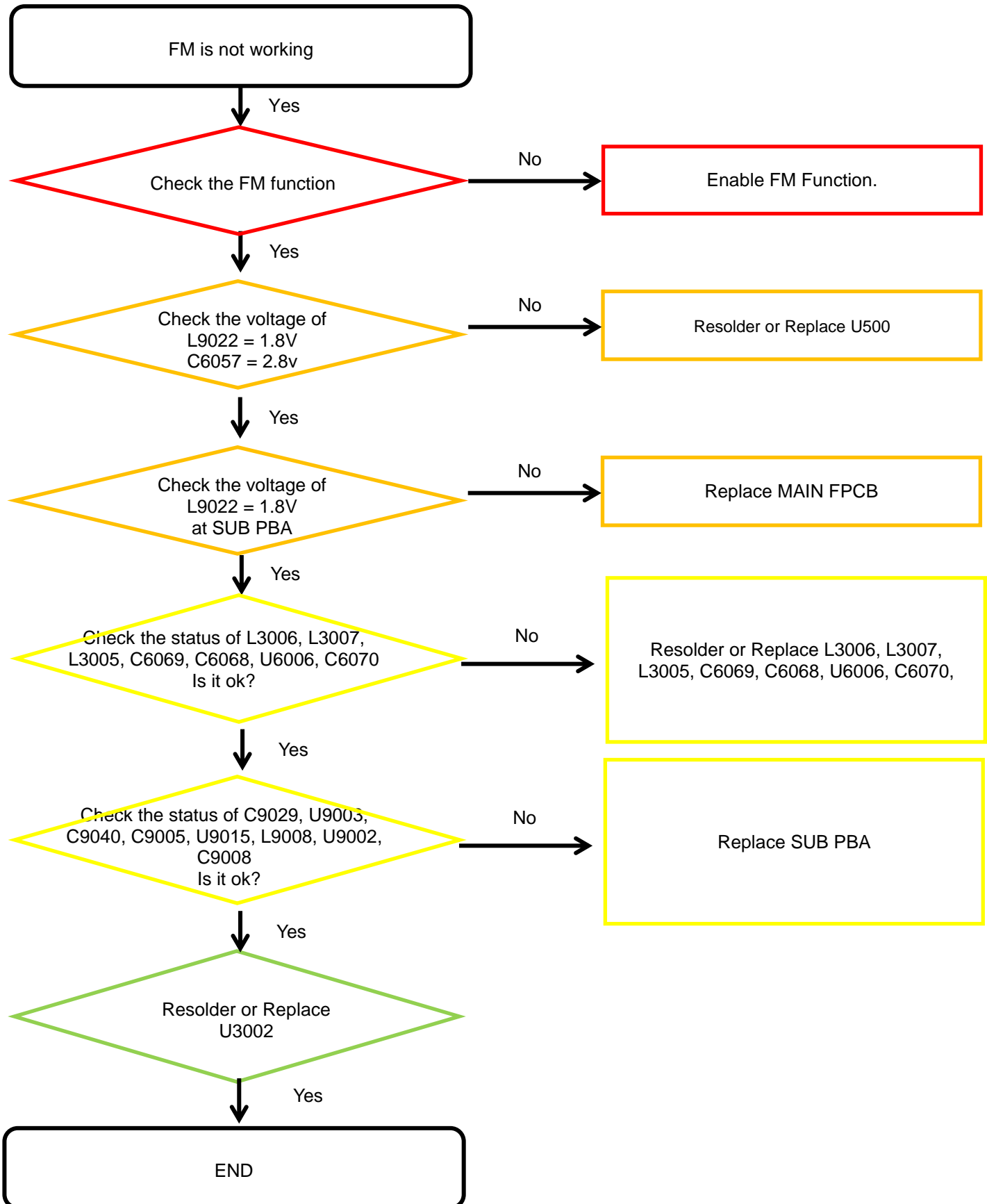
## 8. Level 3 Repair

### 8-3-14. NFC



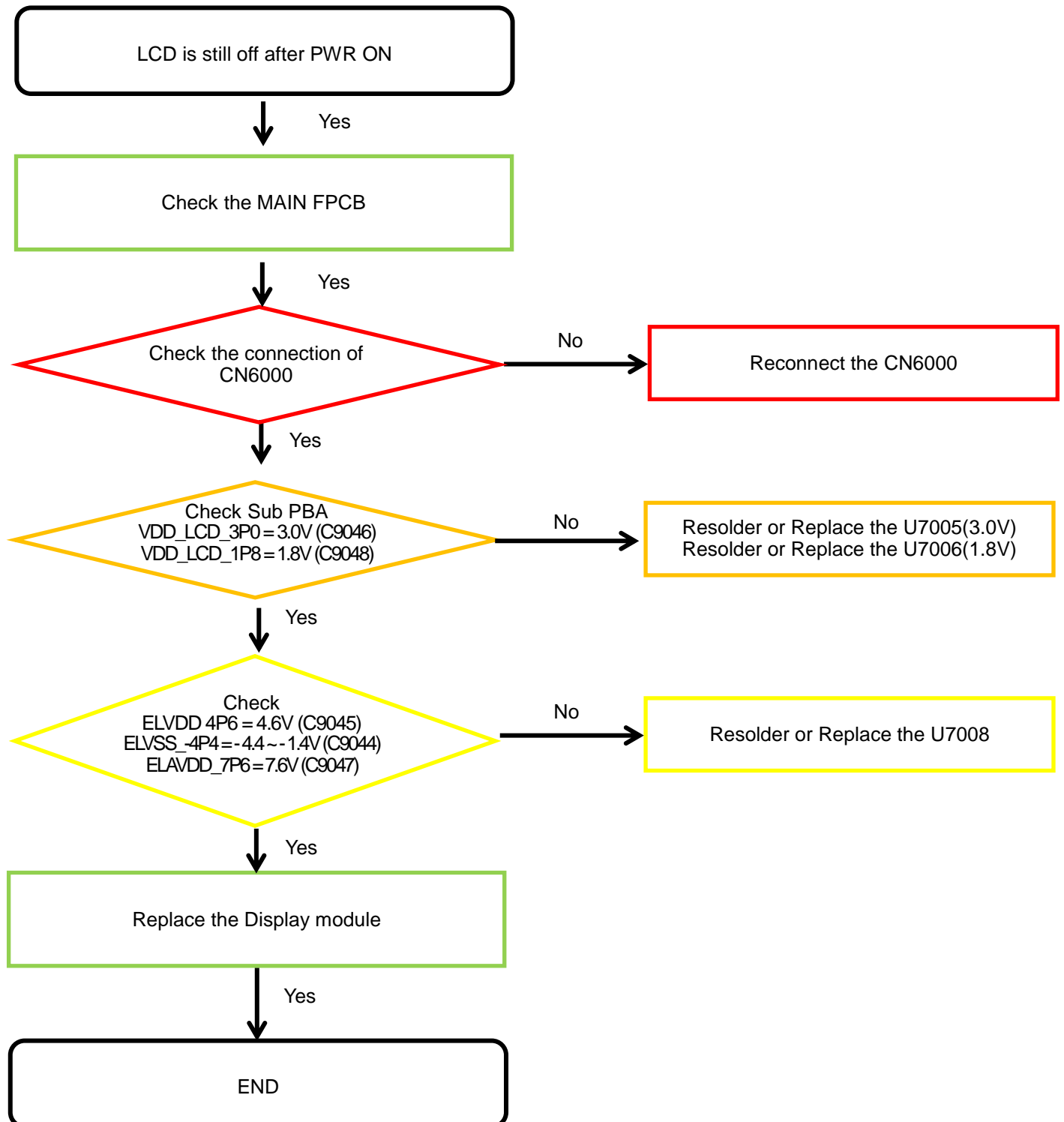
## 8. Level 3 Repair

### 8-3-15. FM radio part



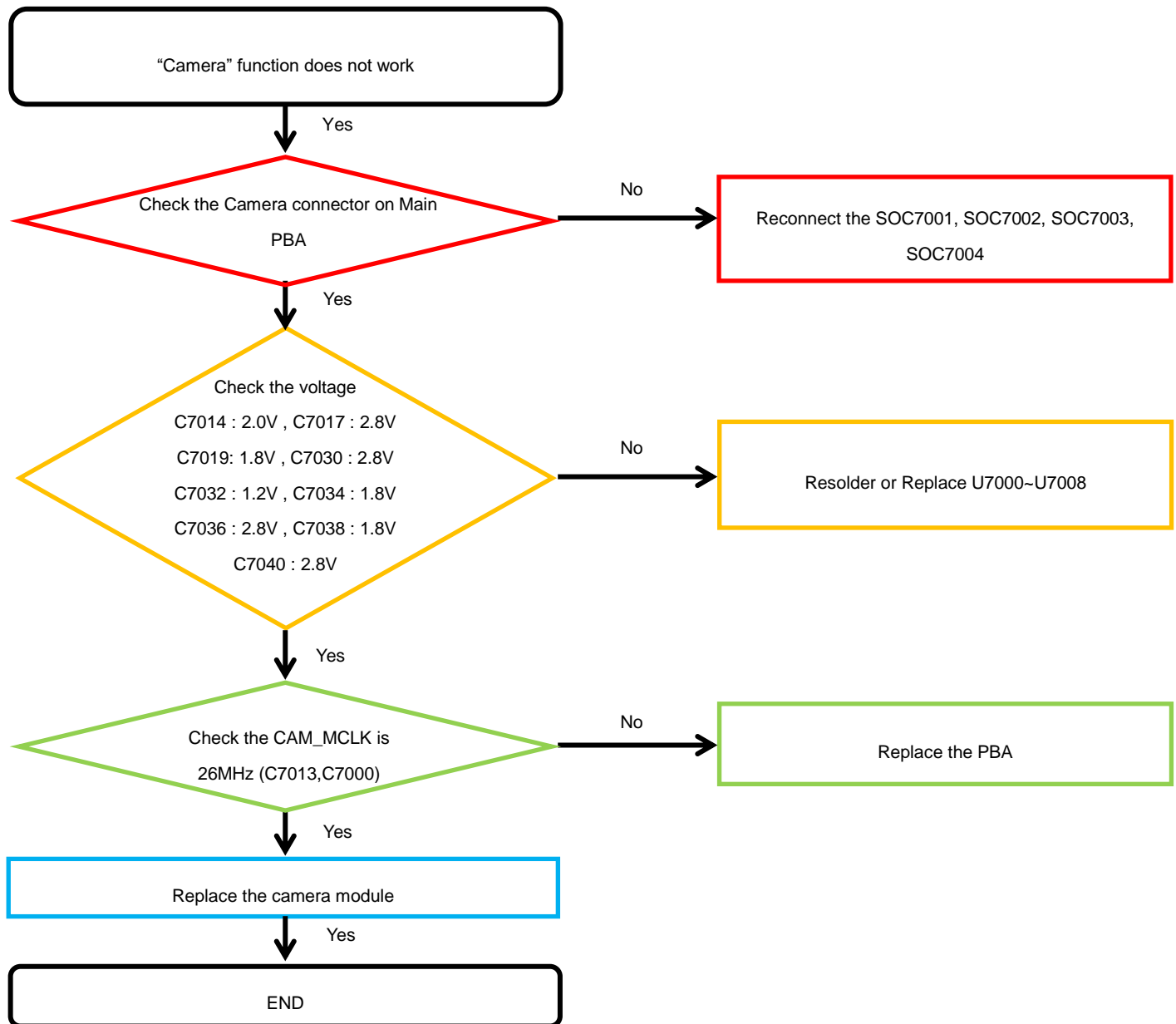
## 8. Level 3 Repair

### 8-3-16. Display



## 8. Level 3 Repair

### 8-3-17. Quad Camera



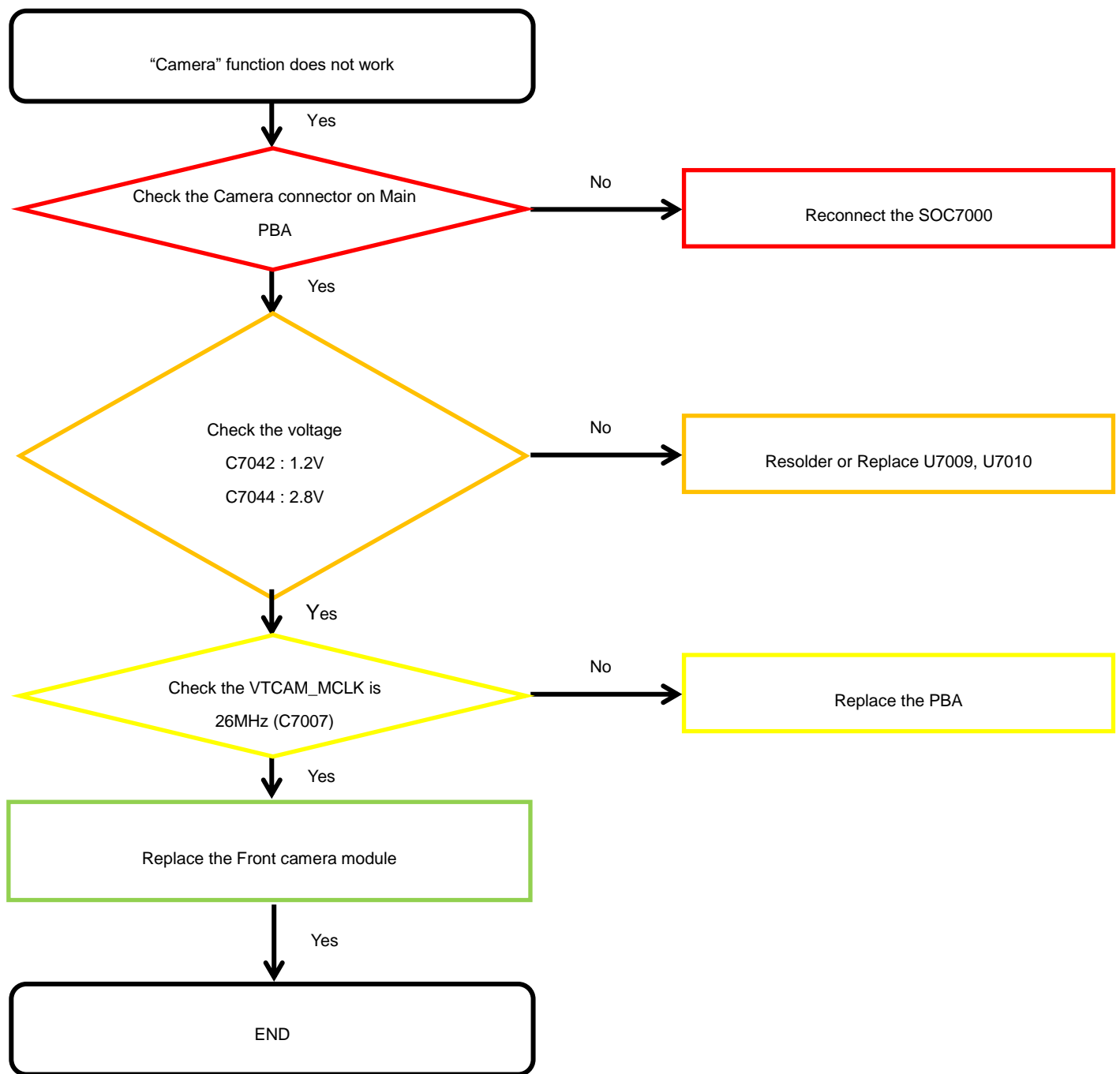


---

## 8. Level 3 Repair

---

### 8-3-18. VT CAMERA

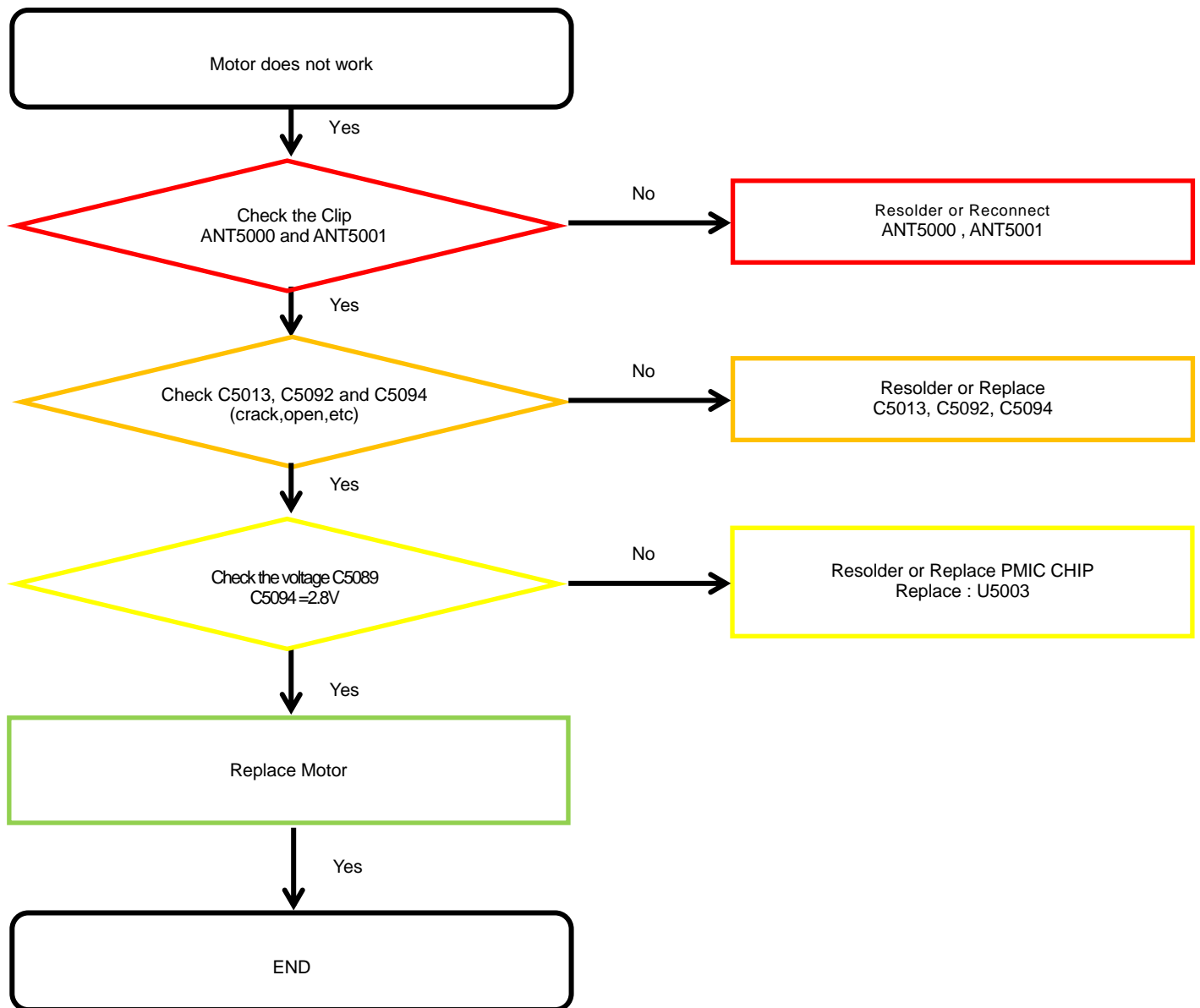


---

## 8. Level 3 Repair

---

### 8-3-19. Motor

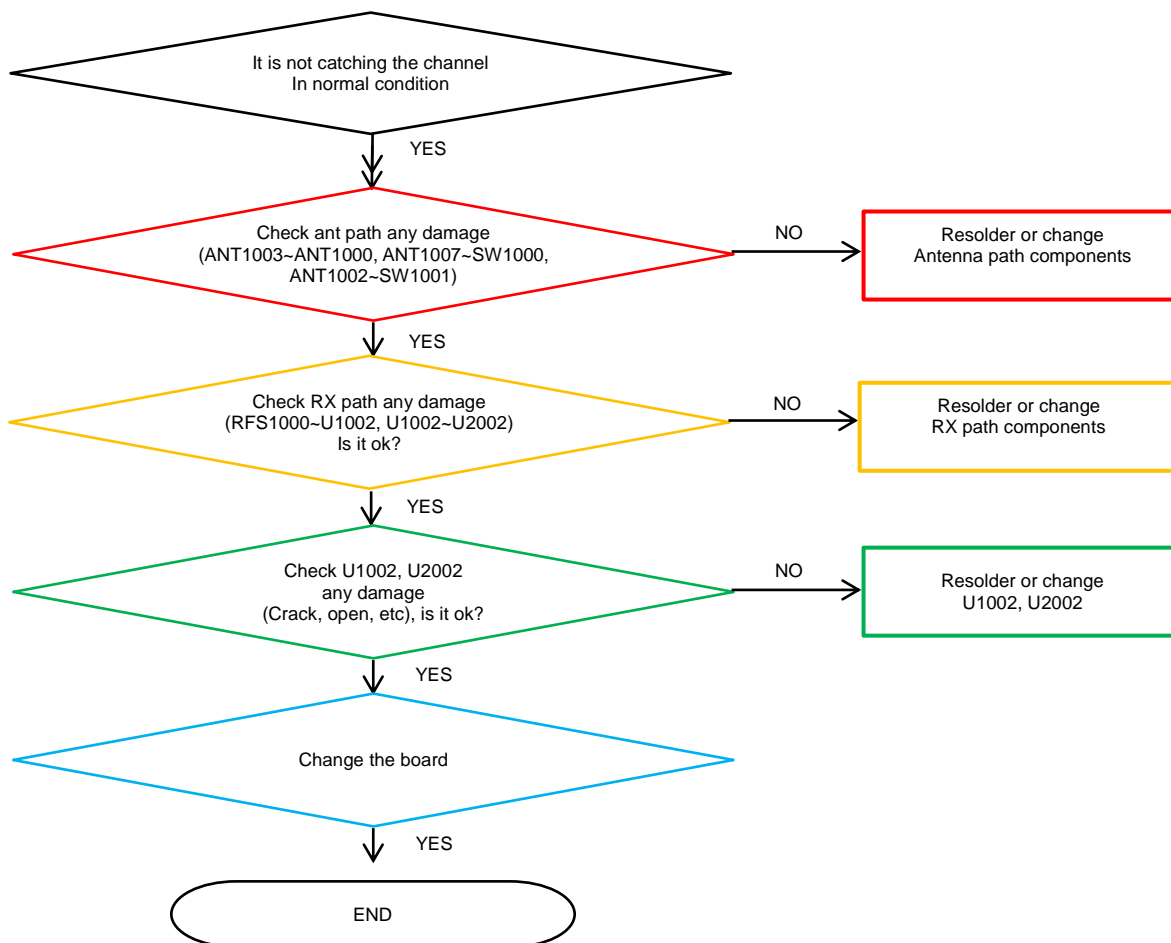


---

## 8. Level 3 Repair

---

### 8-3-20. GSM 850/900/1800/1900, WCDMA B1/2/4/5/8, LTE B1/2/3/4/5/8/12/13/17/20/26/28/66 PRx

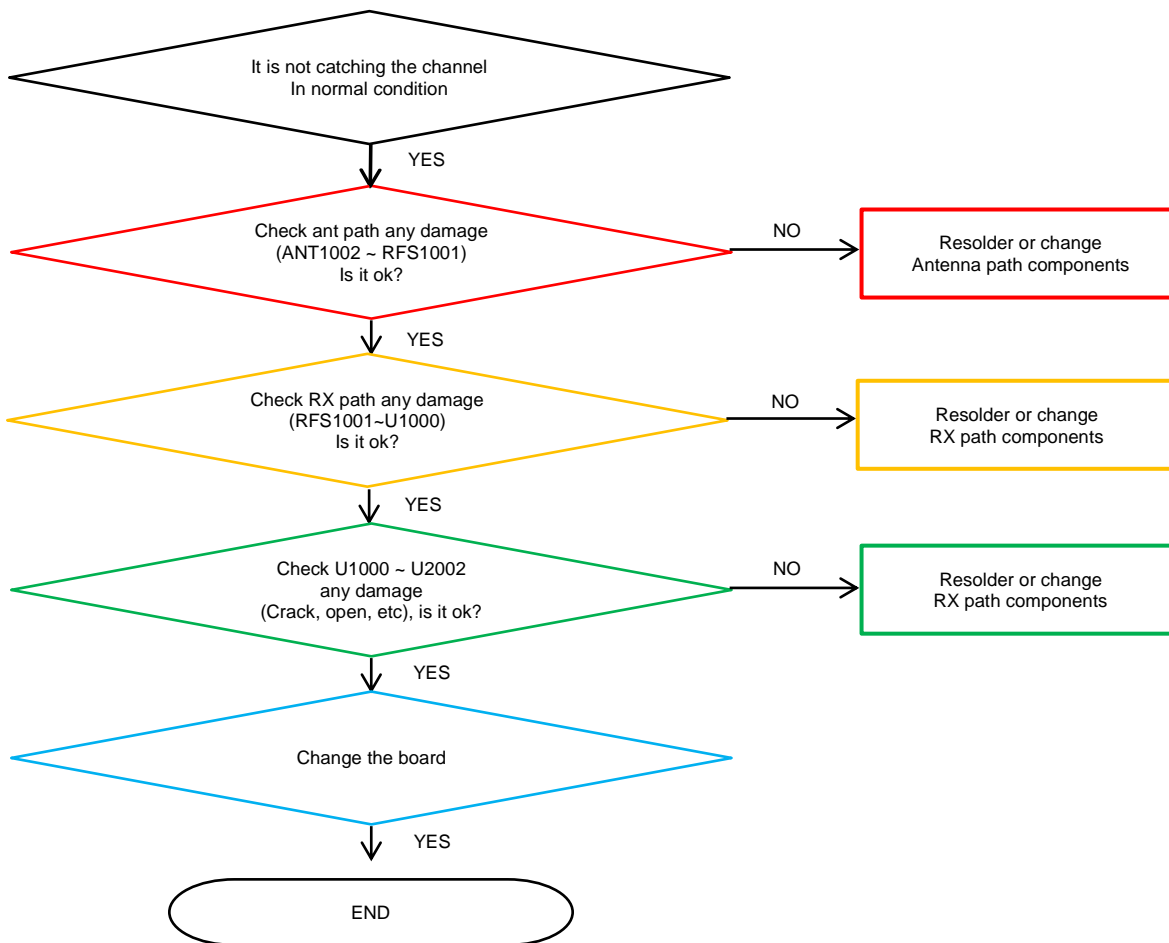


---

## 8. Level 3 Repair

---

### 8-3-21. LTE B7/38/40/41 PRx

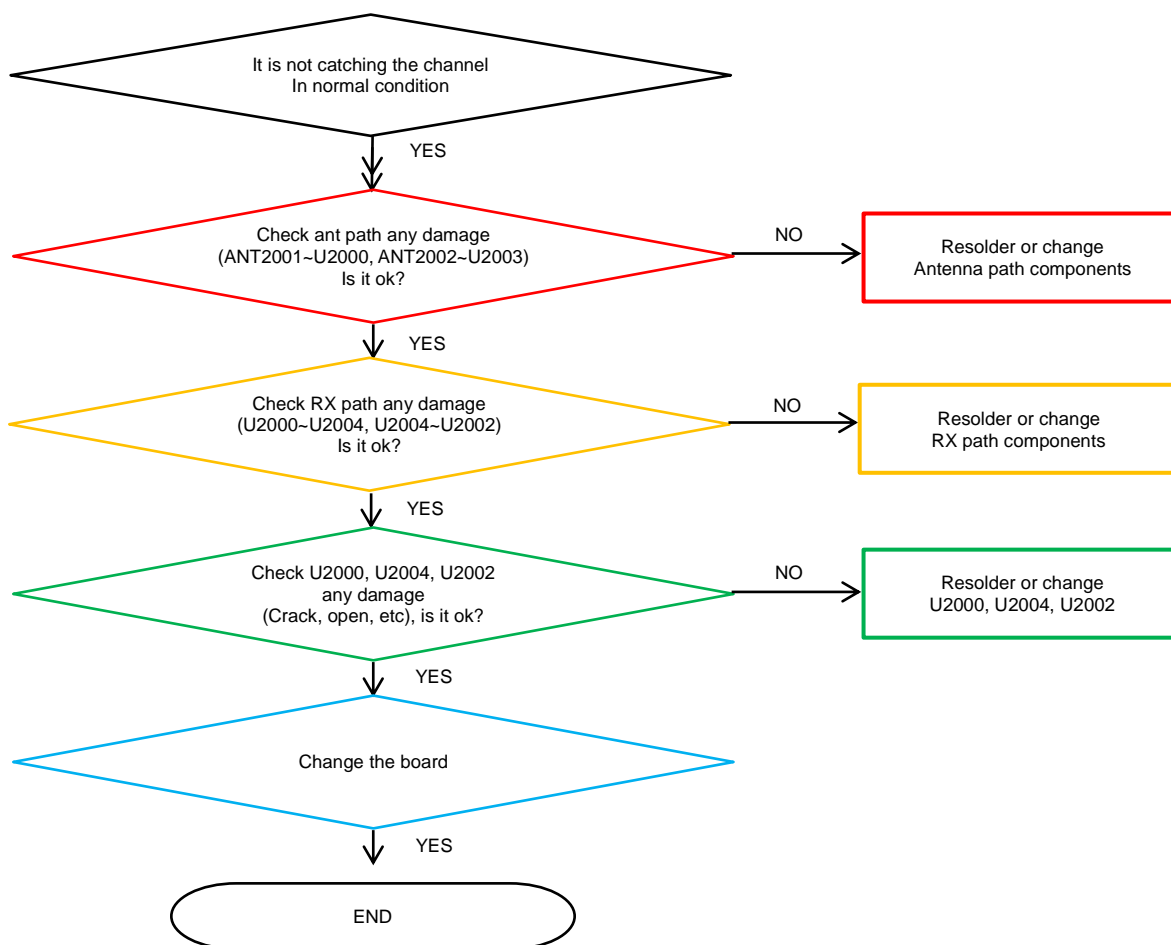


---

## 8. Level 3 Repair

---

### 8-3-22. GSM 850/900/1800/1900, WCDMA B1/2/4/5/8, LTE B1/2/3/4/5/8/12/13/17/20/26/28/66 DRx

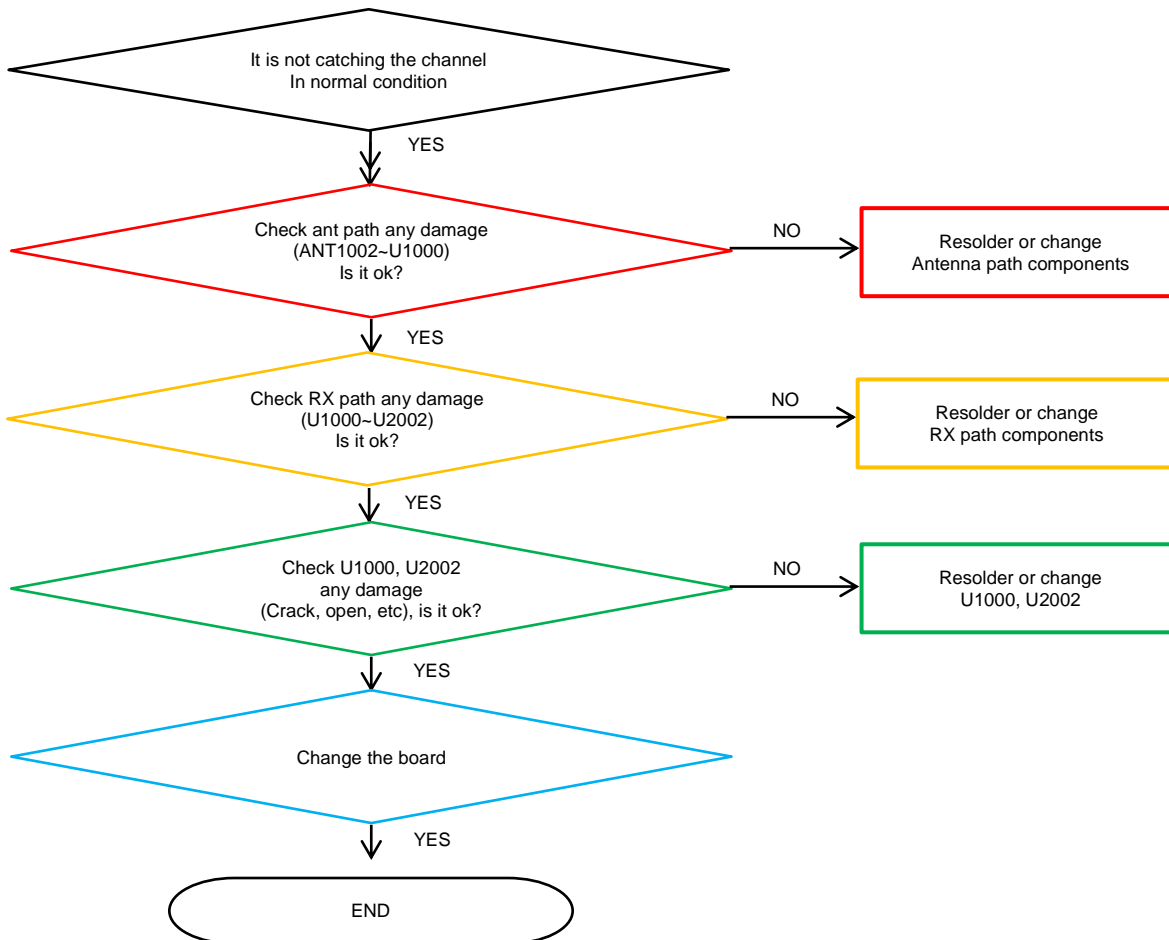


---

## 8. Level 3 Repair

---

### 8-3-23. LTE B7/38/40/41 DRx

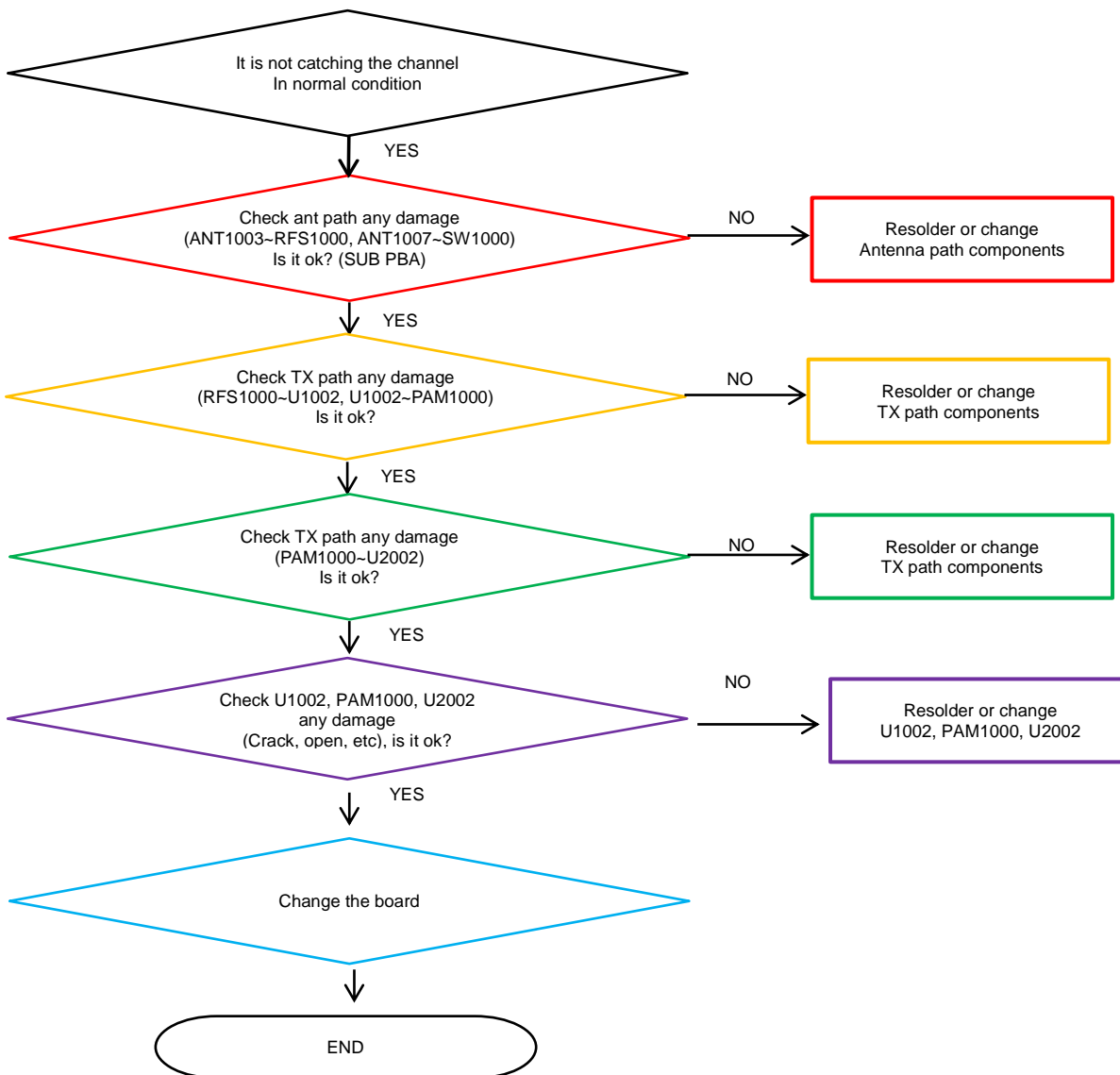


---

## 8. Level 3 Repair

---

### 8-3-24. GSM 850/900/1800/1900, WCDMA B1/2/4/5/8, LTE B1/2/3/4/5/8/12/13/17/20/26/28/66 Tx



---

## 8. Level 3 Repair

---

### 8-3-25. LTE B7/38/40/41 Tx

